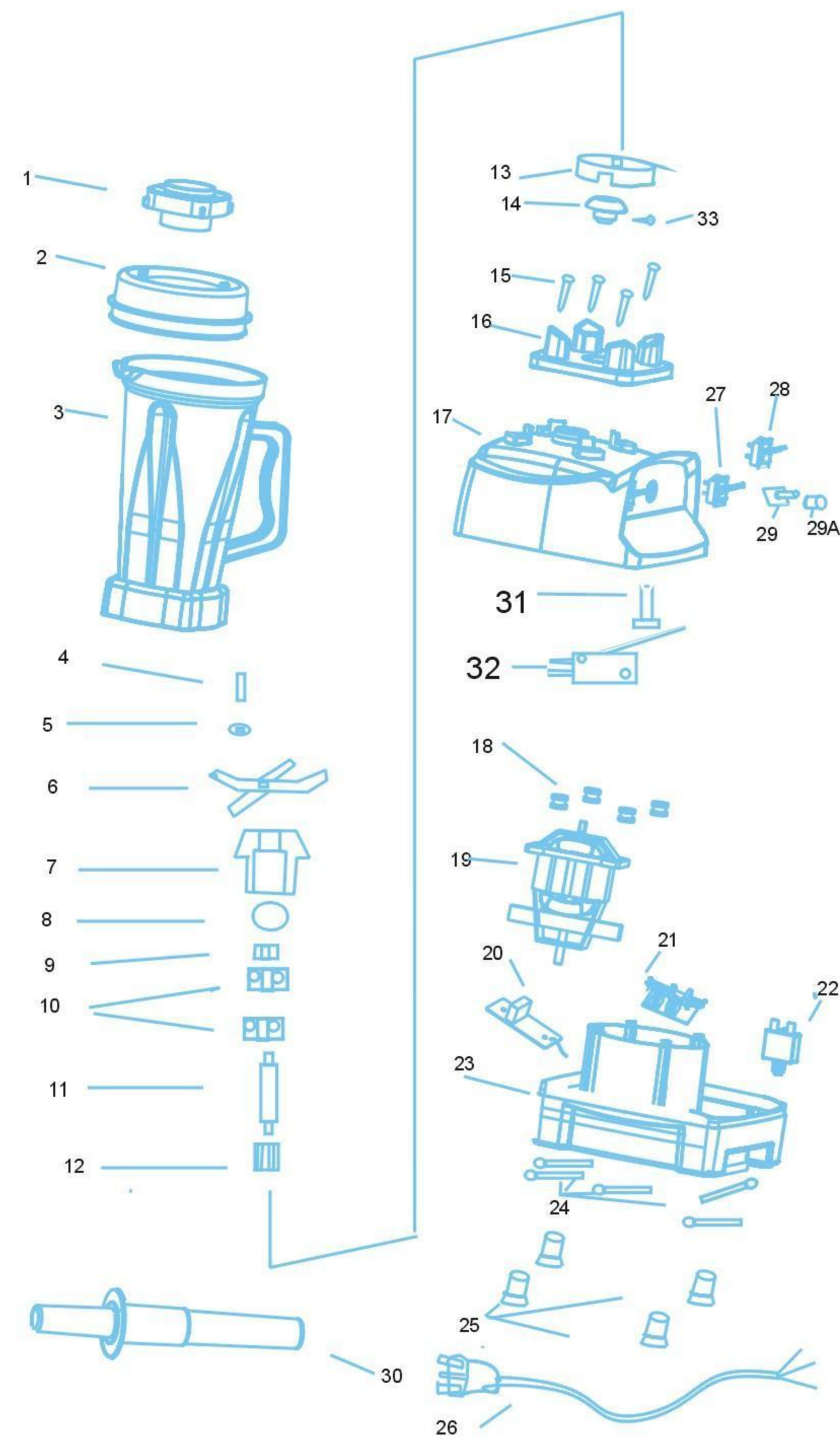


HIGH PERFORMANCE COMMERCIAL BLENDER

Names of Parts

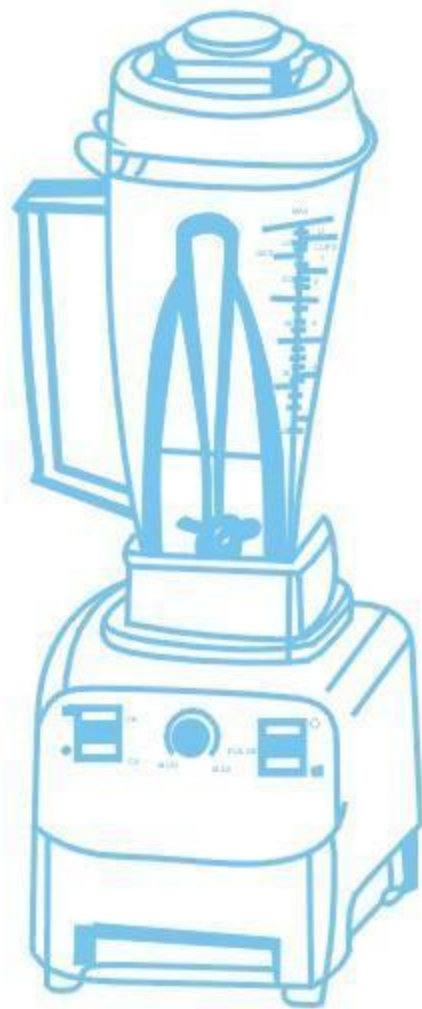


Part Number Description

- 1,small cover-polypropylene
- 2,cover-Poly(TPE)
- 3,plastic container-polycarbonate
- 4,screw-stainless steel
- 5,Meson-stainless steel
- 6,Bit-stainless steel
- 7,Bearing wrap-stainless steel
- 8,Guards against the hydrogel silica gel
- 9,Guards against the hydrogel-Fluorine rubber
- 10,Bearing (set of 2)
- 11,Revolution axis-stainless steel
- 12,Spline-stainless steel
- 13,Nut
- 14,clutch-Nylon
- 15,Screw-Stainless steel
- 16,Backing strip-poly(phenylene ether)
- 17,Outer covering--Acrylonitrile-butadiene-styrene
- 18,Meson-silicon
- 19,Motor(Appendix)
- 20,Manostat PCB(Appendix)
- 21,Velometer PCB(Appendix)
- 22,FUSE
- 23,Foundation-Acrylonitrile-butadiene-styrene
- 24,Presses the line--Acrylonitrile-butadiene-styrene
- 25,Rubber Feet(set of 4)
- 26,Electric Cord
- 27,Power
- 28,Instant Turning switch(Max Power)
- 29,Rotary micro-adjustment
- 29A.knob
- 30,Dolly--Acrylonitrile-butadiene-styrene
- 31,switch column-Acrylonitrile-butadiene-styrene
- 32,jiggle switch
- 33,screw-stainless steel

TT-I122A ★ ★ ★ ★ ★

Industrial high-speed motor, high efficiency, powerful,safety



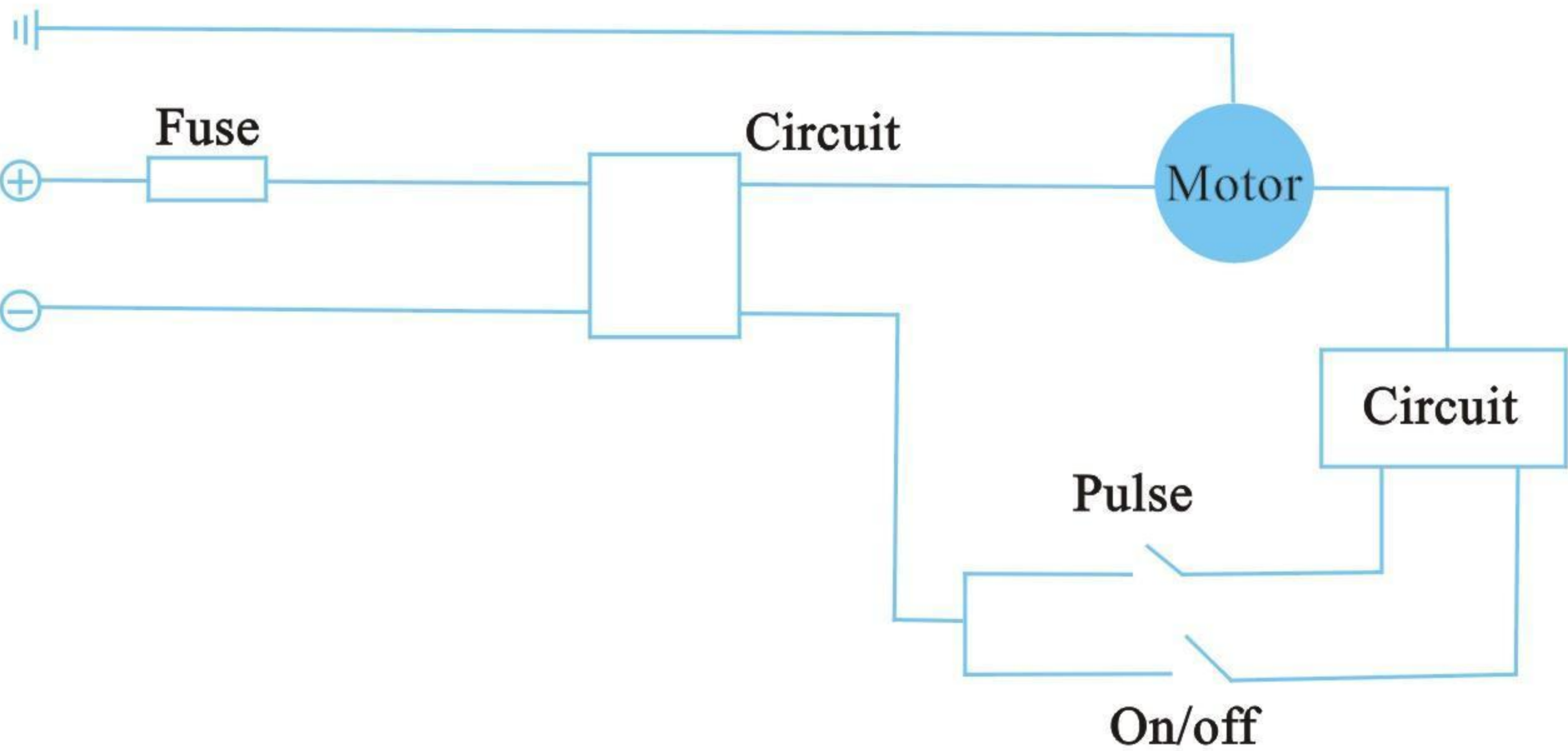


SPECIFICATION

Model	TT-I122A
Voltage	220-240V/50-60Hz/ 110V/50-60Hz
Capacity	2000c.c
Endurance of container	-40 C-180 C
Power	850 W
Weight	4.2Kg
Length of cord	1.8M
Dimension	W205*D230*H510mm
Protector	Current protector, Thermal protector for Motor

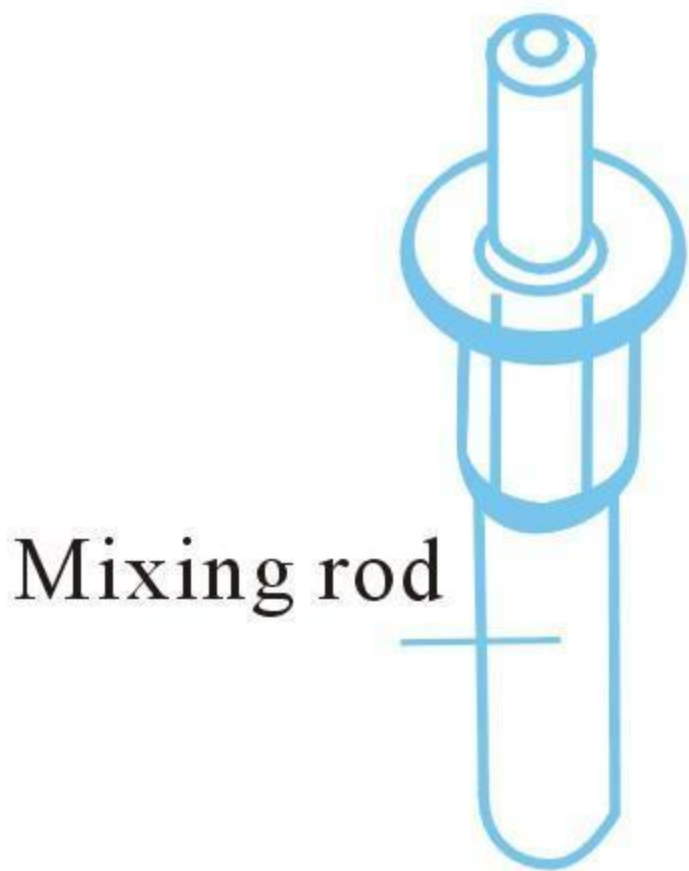
*Above "Specification: in the box "Warranty: One year warranty on parts only and ninety days on labor due to manufacturing defects. Factory reseerves the right to replace or repair the umit when carried into the authorized service agency for inspection.

Electric circuit

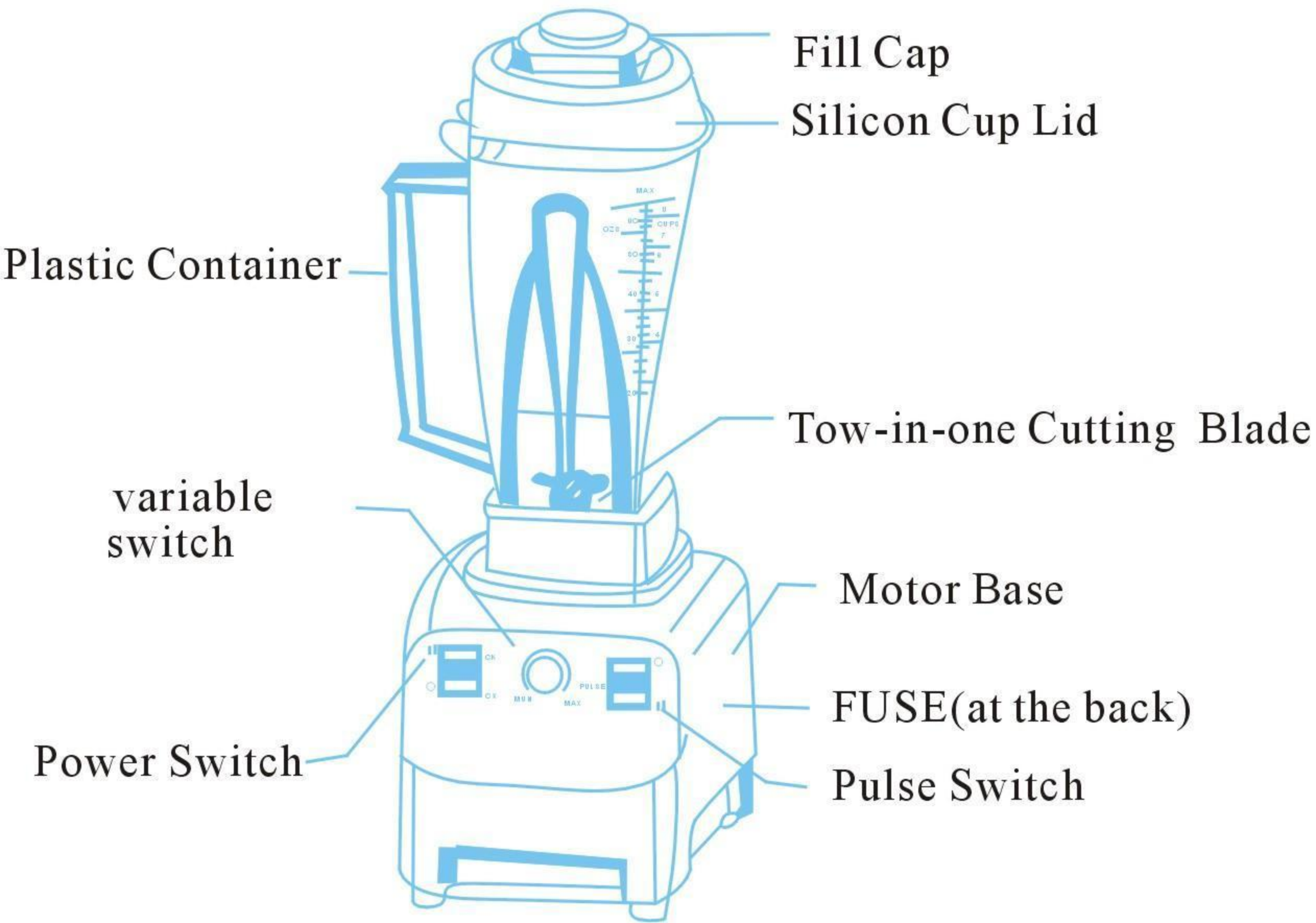


Thank you for your patronage. This product is made with high revolution motor and precision technology. Read the manual carefully before using this product to facilitate operation, safety, and efficiency.

Name of parts



Mixing rod



CAUTIONS

- 1.Ensure the container is properly seated on motor base before starting.
- 2.Hold the container when it starts, as the motor is quite powerful. In addition, ensure the clutch is in place.
- 3.Do not tamper when starting the motor. Put the cover on when using tamper.
- 4.To prevent the danger of the sharp blade, don't get food from the container by hand when the container is on the motor base.
- 5.Before pouring food out of the container, remove it from the motor base first.
- 6.Do not touch on/off switch carelessly before or after starting.

SAFEGUARDS

- 1.Unplug when the blender is not in use
- 2.The cover can be open only when the blade agitator stops completely.
- 3.When cleaning, ensure to unplug first. The main base and the container must be washed separately.
- 4.Don't put the motor base in the water or the dishwasher.
- 5.When it's in use, keep children away to prevent improper action by the children.

If the supply cord is damaged, it must be replaced by the manufacturer, its service agent or similarly qualified persons in order to avoid hazard.



MAINTENANCE TIPS

- 1.When cleaning, unplug & turn main switch off.
- 2.Clean the body & the cover with soft cloth.
- 3.Don't clean inside of container by hand unless blade is already removed.
- 4.Clean the rotary shaft & the motor with dry cloth.
- 5.When it is not easy to remove dirt, clean with detergent and then wipe it by dry cloth

TROUBLESHOOTING

Check if the circuit breaker button is turned off. Press it to reset. If the blender still doesn't work, please check the list in the following.

1. The power plug is inserted into the power outlet.
2. Fuse or automatic switch shuts off.
3. Power cut or not.

If no problems found above, please call the service center. Don't handle it on your own.



CLASSIFICATION

- * **Slush ice Blade:** Available for ice cube, coffee beans, meat, etc.
- * **Wet materials:** organic beverage, wheat grass, fruit juice...etc.

When using the mixing rod, take off the cap first and then insert into the cap lid as shown in the drawing.



CAUTION!!

- No metal articles, such as knives, forks, spoons...etc in the container.
- To prevent the danger of the cutting blade, don't clean by hand.



FEATURE

1. Multi-use (enclosed with fruit & vegetable organic operation booklet)
2. Industrial high-speed motor, high efficiency, powerful, one year warranty.
3. Double automatically protective electric circuit (thermal/current protector)
4. stainless steel & hardened blade
5. Using high quality tempered transparent plastic container, won't easily break (high temperature vulcanization treatment, food grade rubber cap, safe and hygiene is safeguarded)

OPERATION INSTRUCTION

1. Make sure the left switch is locating at OFF.
2. Connect the power, put the jug on the base before you have confirmed the cap is well covered on the jug.
3. Make the left switch locate at ON.
4. Set the speed adjustor to the suitable speed.
5. If you want to make a higher speed, please push the PULSE switch on the right.

FUNCTIONS

This blender is equipped with an industrial powerful motor which rotary speed is up to 25,000rpm. Dry or wet food can be quickly & efficiently converted into powder or paste, and still retains its original nutrition and flavor. It is a professional high-speed blender.