

HS10E SPRIAL MIXER



Operation Manual Index

Production brief	1
Figure 1 Transmission case.....	2
Figure 2 Spiral hook axle full sets	3
Figure 3 Bowl axle full sets	4
Figure 4 Strain wheel I	5
Figure 5 Strain wheel II.....	6
Figure 6 Transmission axle	7
Figure 7 Safety cover full sets	8
Technic parameter and warning	9
Electric diagram	10

SPIRAL MIXER PARTS LIST

PRODUCTION BRIEF

With the gear transmission and low power consumption, the working life is long, while seldom breaking-down.

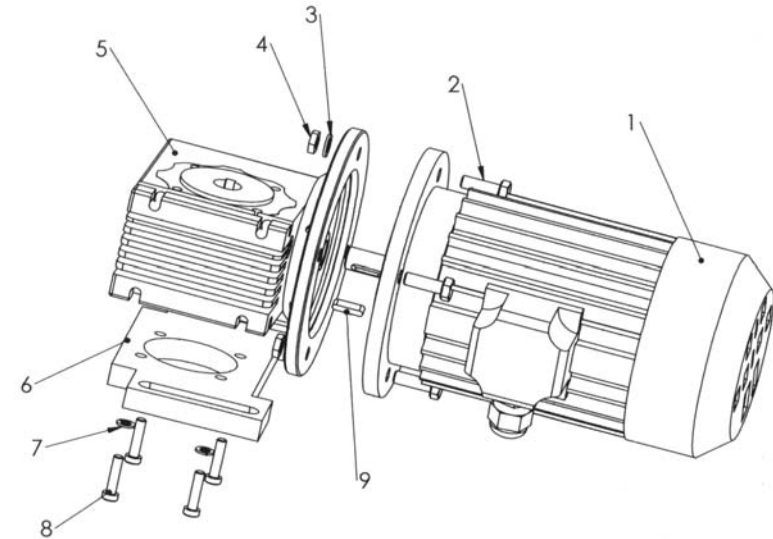
The spiral always turns clockwise to press the flour regiment. While the bowl's direction can be chosen clockwise or anti-clockwise according to requestment.

Making flour regiment crumple to press well. The flour tendon is rising quickly. The temperature of flour regiment is not high, low-consuming electricity.

The weight of machine is light, so the conveyance cost is low!

SPIRAL MIXER PARTS LIST

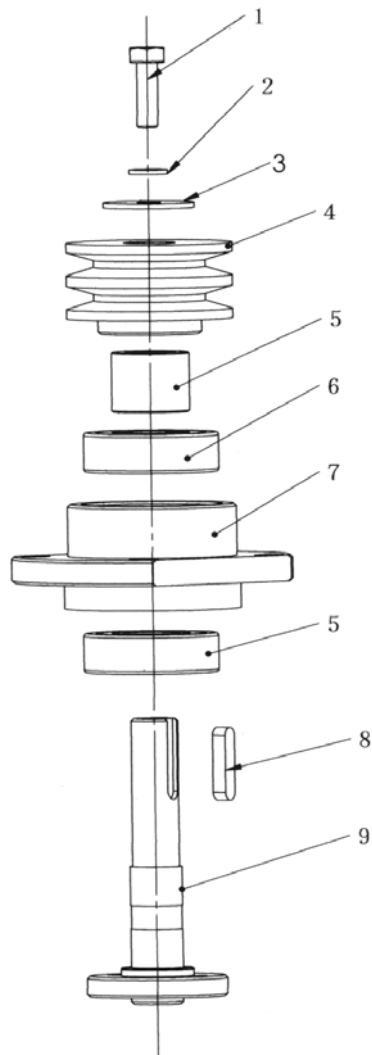
FIGURE 1 TRANSMISSION CASE



Item	Description	Qty
1	motor	1
2	screw M8*25	4
3	spring gasket $\phi 8$	4
4	nut M8	4
5	transmission case	1
6	motor board	1
7	spring gasket $\phi 6$	4
8	screw M6*25	4
9	key 5*5*20	1

SPIRAL MIXER PARTS LIST

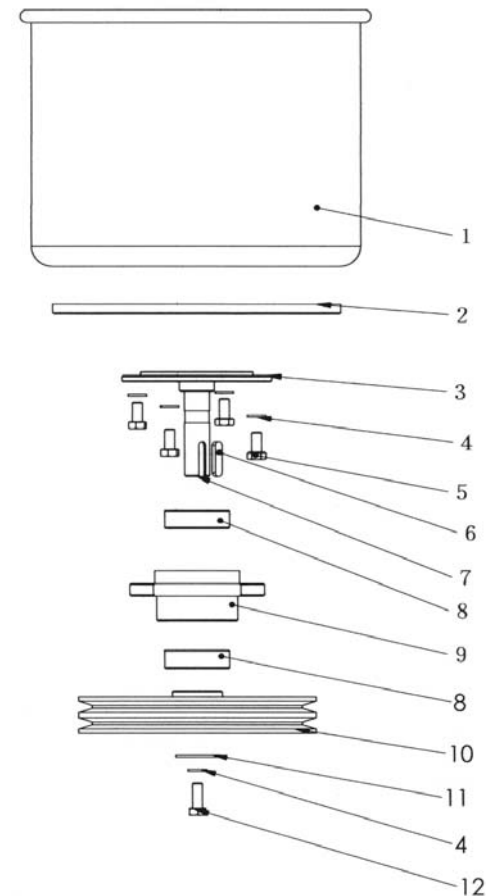
FIGURE 2 SPIRAL HOOK AXLE FULL SETS



Item	Description	Qty
1	screw M8*25	1
2	spring gasket 8	1
3	gasket 35*9*3	1
4	small belt wheel	1
5	spial hook axle knot	1
6	bearing 6304	2
7	bearing seat	1
8	key 6*6*28	1
9	spiral hook axle	1

SPIRAL MIXER PARTS LIST

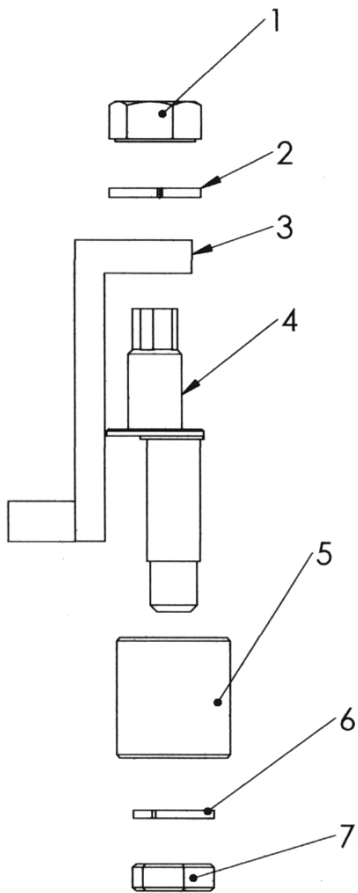
FIGURE 3 BOWL AXLE FULL SETS



Item	Description	Qty
1	bowl	1
2	bowl board	1
3	bowl axle board	1
4	spring gasket 8	4
5	serew M8*16	4
6	key 6*6*28	1
7	bowl axle	1
8	bearing 6304	2
9	bearing seat	1
10	bowl belt wheel	1
11	gasket 35*9*3	1
12	serew M8*20	1

SPIRAL MIXER PARTS LIST

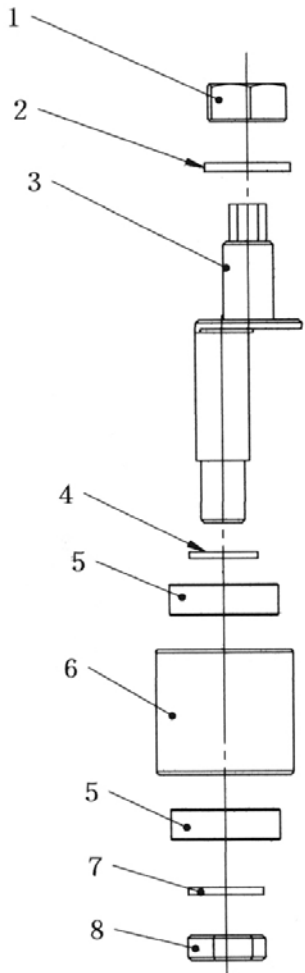
FIGURE 4 STRAIN WHEEL I



Item	Description	Qty
1	nut M16	1
2	gasket 16	1
3	strain wheel seat	1
4	strain wheel axle I	1
5	strain wheel knot	1
6	spring gasket 14	1
7	nut M14	1

SPIRAL MIXER PARTS LIST

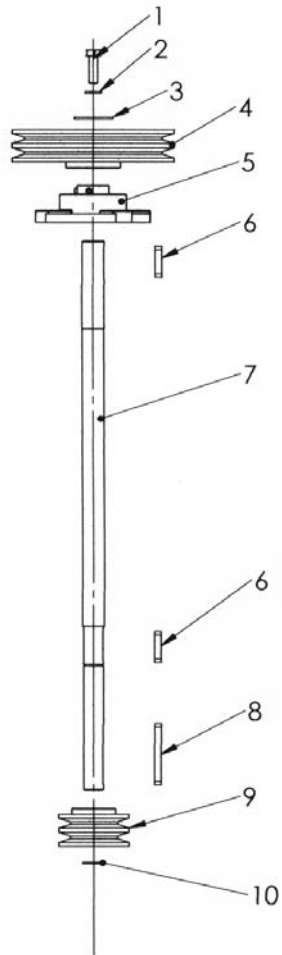
FIGURE 5 STRAIN WHEEL II



Item	Description	Qty
1	nut M16	1
2	gasket 16	1
3	strain wheel axle II	1
4	gasket	1
5	bearing 6003	2
6	strain wheel knot II	1
7	spring gasket 14	1
8	nut M14	1

SPIRAL MIXER PARTS LIST

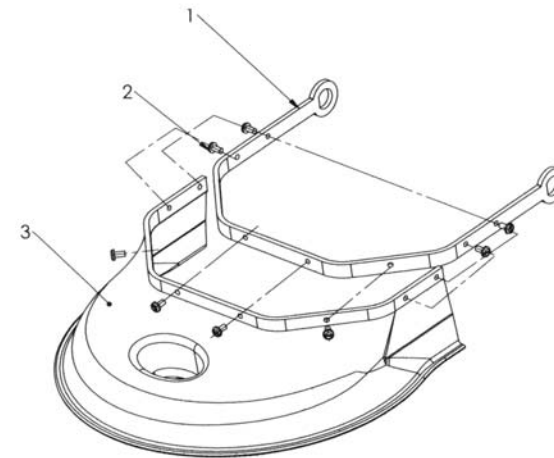
FIGURE 6 TRANSMISSION AXLE FULL SETS



Item	Description	Qty
1	screw	1
2	spring gasket 8	1
3	gasket 35*9*3	1
4	transmission big belt wheel	1
5	bearing UCFL204	1
6	key 6*6*28	2
7	transmission axle	1
8	key 6*6*55	1
9	small belt wheel	1
10	stop ring 18	1

SPIRAL MIXER PARTS LIST

FIGURE 7 SAFETY COVER FULL SETS



Item	Description	Qty
1	safety shelf	1
2	screw M4*8	8
3	safety cover	1

SPIRAL MIXER PARTS LIST

TECHNIC PARAMETER

	SH10A
VOLT (V)	220- 240V ~
FREQUENCY (Hz)	50
INPUT POWER (W)	600
MAX. SPIRAL QUANTITY(kg)	<3
SPIRAL SPEED(r/min)	100
BOWL SPEED(r/min)	12

- Suggestion
1. The paste occupies the capacity of barrel material 30%-60% suitably.
 2. Flour water quantity is 50%-57%
 3. When the material is full, the machine can not work over 20 minutes continually

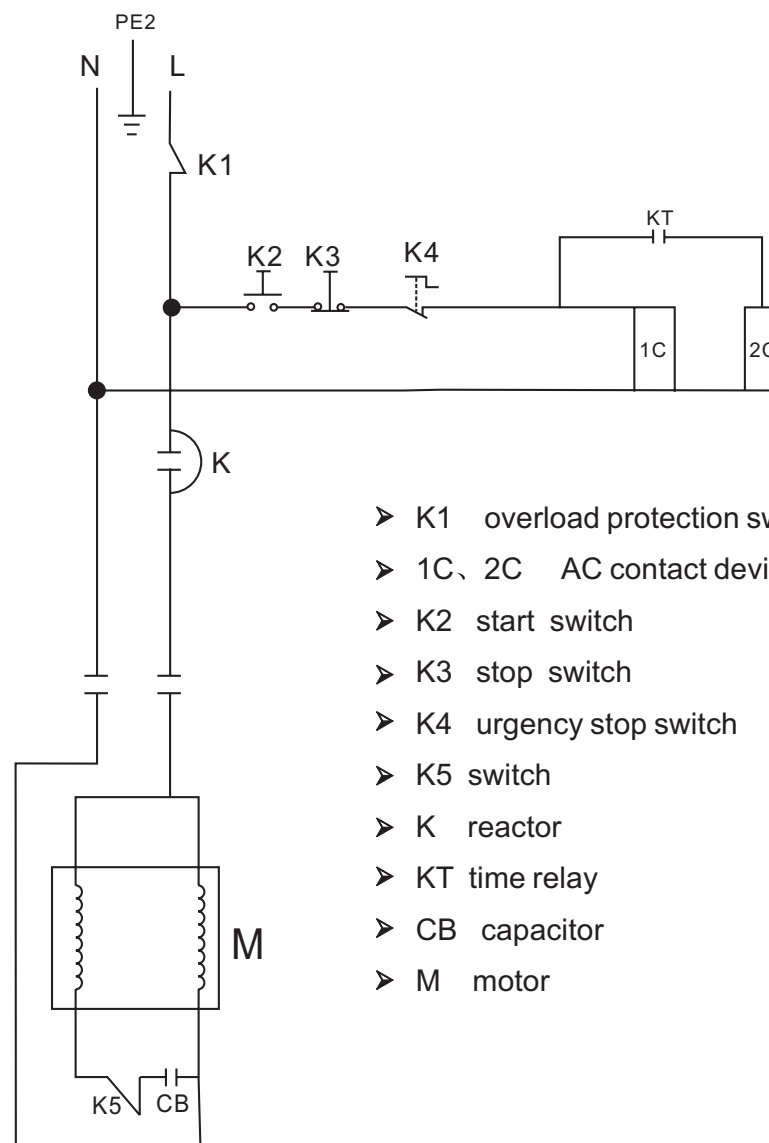
Warning



1. All maintenance and protection can be operated under shutting off the power.
2. Electricity appliance need operate with professional electrician.
3. Shut off the total power after using the machine each time.
4. When the machines is working, putting hands into the barrel or holding the spiral hook are prohibited.
5. Teenagers can not close to spiral machine.

SPIRAL MIXER PARTS LIST

ELECTRIC DIAGRAM



- K1 overload protection switch
- 1C、2C AC contact device
- K2 start switch
- K3 stop switch
- K4 urgency stop switch
- K5 switch
- K reactor
- KT time relay
- CB capacitor
- M motor