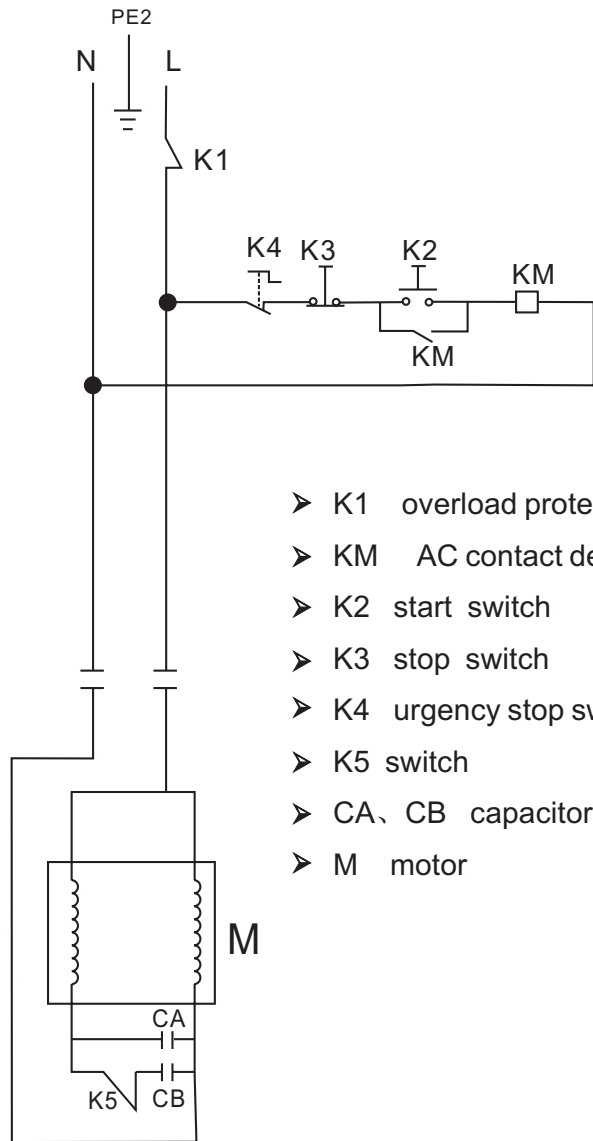


ELECTRIC DIAGRAM



- K1 overload protection switch
- KM AC contact device
- K2 start switch
- K3 stop switch
- K4 urgency stop switch
- K5 switch
- CA、CB capacitor
- M motor

# HM20B

(110V,60Hz)

## SPIRAL MIXER



# Operation Manual Index

Figure 1 Shape and inside configuration.....1

Figure 2 Middle axle .....2

Figure 3 Bowl axle.....3

Figure 4 Spiral axle .....4

Figure 5 Technic parameter and warning.....5

Electric diagram.....6

## TECHNIC PARAMETER

	HM20B
VOLT (V)	110 ~
INPUT POWER (W)	900
MAX. SPIRAL QUANTITY(kg)	<8
SPIRAL SPEED(r/min)	198
BOWL SPEED(r/min)	22

- Suggestion
1. The paste occupies the capacity of barrel material 30%-60% suitably.
  2. Flour water quantity is 50%-57%
  3. When the material is full, the machine can not work over 20 minutes continually

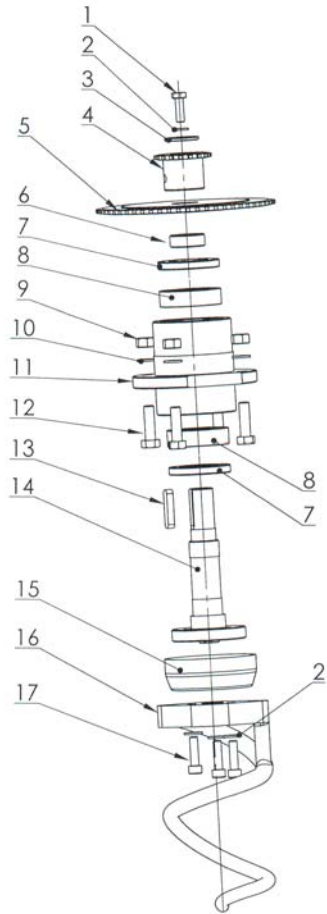
## Warning



1. All maintenance and protection can be operated under shutting off the power.
2. Electricity appliance need operate with professional electrician.
3. Shut off the total power after using the machine each time.
4. When the machines is working, putting hands into the barrel or holding the spiral hook are prohibited.
5. Teenagers can not close to spiral machine.

## HM20B SPIRAL MIXER PARTS LIST

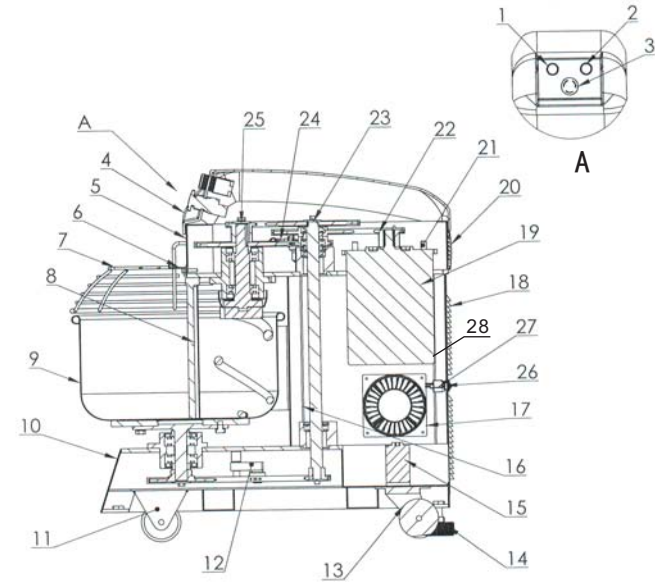
Figure 4 SPIRAL AXLE



	Names of spare parts	Quantity
1	Screw M8*25	1
2	Spring gasket 8	4
3	Big gasket 34*8.5*3	1
4	Small sprocket (Z=18)	1
5	Big sprocket (Z=59)	1
6	Sealing sleeve	1
7	Oil seal 35*62*8	2
8	Bearing 6206	2
9	Nut M10	4
10	Spring gasket 10	4
11	Bearing seat	1
12	Screw M10*35	4
13	Key 8*40	1
14	Spiral hook axle	1
15	Ring	1
16	Spiral hook	1
17	Screw M8*30	3

## HM20B SPIRAL MIXER PARTS LIST

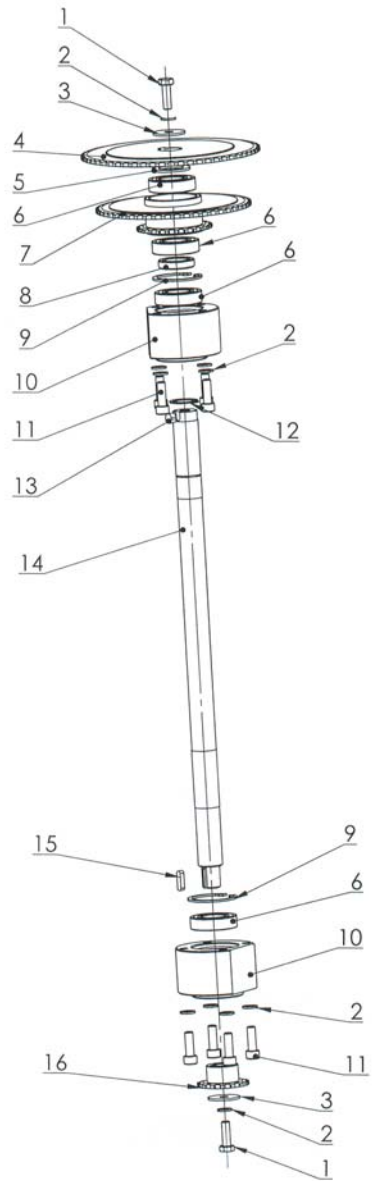
Figure 1 SHAPE AND INSIDE CONFIGURATION



	Spare parts name	Quantity
1	Stop switch	1
2	Start switch	1
3	Emergency switch	1
4	Top cover	1
5	Top body	1
6	The positioning plate	1
7	Safety net	1
8	Dividing paste pole	1
9	Bowl	1
10	Seat	1
11	Front wheel	1
12	The tension wheel	1
13	Rear wheel	2
14	The supporting foot	4

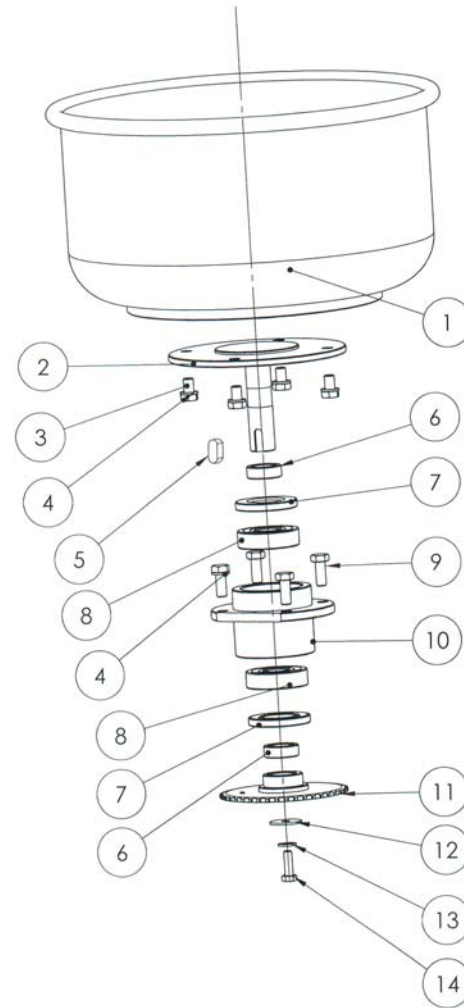
	Spare parts name	Quantity
15	AC contactor	1
16	Stand	1
17	Fan	1
18	Rear cover	1
19	Motor	1
20	Rear cover of top body	1
21	Support axle of motor	4
22	Sprocket of motor	1
23	Middle axle	1
24	Micro switch	1
25	Spiral axle	1
26	Overload switch	1
27	Cable	1
28	Capacitor(start:CD 300uF/150V; work:CBB 100uF/250V)	1

Figure 2 MIDDLE AXLE



Item	Description	Qty
1	Screw M8*25	2
2	Spring gasket φ8	10
3	Big gasket 32*8.5*2	2
4	Big sprocket of middle axle(Z=59)	1
5	Gasket 38*26*2	1
6	Bearing 6005	4
7	Double sprocket(Z=51,Z=24)	1
8	Ring	1
9	Stop ring φ47*2	2
10	Bearing seat of middle axle	2
11	Screw M8*25	8
12	Stop ring φ25*1.5	1
13	Key 8*6	1
14	Middle axle	1
15	Key 5*20	1
16	Small sprocket of middle axle(Z=15)	1

Figure 3 BOWL AXLE



Item	Description	Qty
1	Bowl	1
2	Bowl axle	1
3	Screw M10*16	4
4	Spring gasket φ10	4
5	Key 8*7*18	1
6	Sealing sleeve	1
7	Oil seal 35*62*8	2
8	Bearing 6305	2
9	Screw M8*25	4
10	Bearing seat	1
11	Big sprocket (Z=42)	1
12	Big gasket 32*8.5*3	1
13	Spring gasket φ8	1
14	Screw M8*25	1