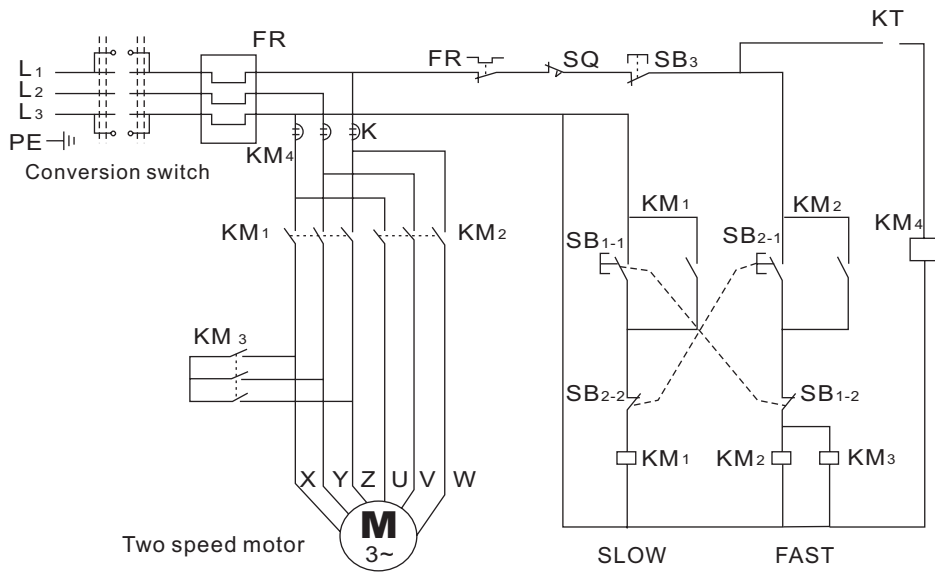


Electric Diagram



HS40B / HS50B Spiral Mixer
USER MANUAL
CE



HS40B / HS50B Spiral Mixer

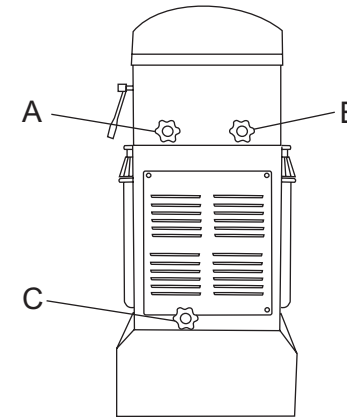
Operation Manual Index

- P1. Machine equipment chart
- P2. Shape 1 Full set of box
- P3. Shape 2 Full set of motor
- P4. Shape 3 Full set of middle transmission shaft
- P5. Shape 4 Full set of spiral hook axle
- P6. Shape 5 Full set of bowl axle
- P7. Shape 6 Circuit board
- P8. Shape 7 Full set of safety net
- P9. Shape 8 Full set of baffle
- P10. Shape 9 Full set of electric box
- P11. Installment, adjustment and operation
- P12. Damage making and technical data
- P13. Maintenance and warning
- P14. Electricity diagram

Maintenance and warning

Maintenance of machine

- Usually, notice the voice and operation conditions of machine. All problems can be solved in time and ahead of time.
- Check the belt loose condition regularly, and adjust in time. The order of adjustment is as following: Open the top cover, disentangle the four screws for motor, twist A, B tightly, then screw down the four screws for motor, at last twist C tightly.



Warning



1. All maintenance and protection can be operated under shutting off the power.
2. Electricity appliance need operate with professional electrician.
3. The protection net is checked to operate or not before use. Lift up the protection net, shut off the power of control board, then puts down protection net and electrify the control board.
4. Shut off the total power after using the machine each time.
5. When the machine starts up rapidly, the current is big. In order to protect the machine, the computer program sets the postponing 3 seconds, the sudden slow rotary belongs to design but not damages.
6. When the machines is working, putting hands into the barrel or holding the spiral hook are prohibited.
7. Teenagers can not close to spiral machine.

HS40B /HS50B Spiral Mixer

Damage problems solving and technical data

Damage problems solving

Damages	Reasons	Methods
When the machine runs automatically, press the pause button in the middle way, the machine can not work even re-start up it.	The computer can not renew.	Lift up the protection net, turn off the power, and put down protection net.
The machine stops suddenly and it takes a long time to run overtime.	Electricity components is too hot	Open the top of electricity door, and press the machine red button
Speed of spiral slows down.	The belt is loose or voltage is too small	Adjust belt tightly. If the star handle can not be twisted tightly, take off the star handle and add 1-2 flat gaskets (Page 13 A/B/C). At last, we twist it tightly.

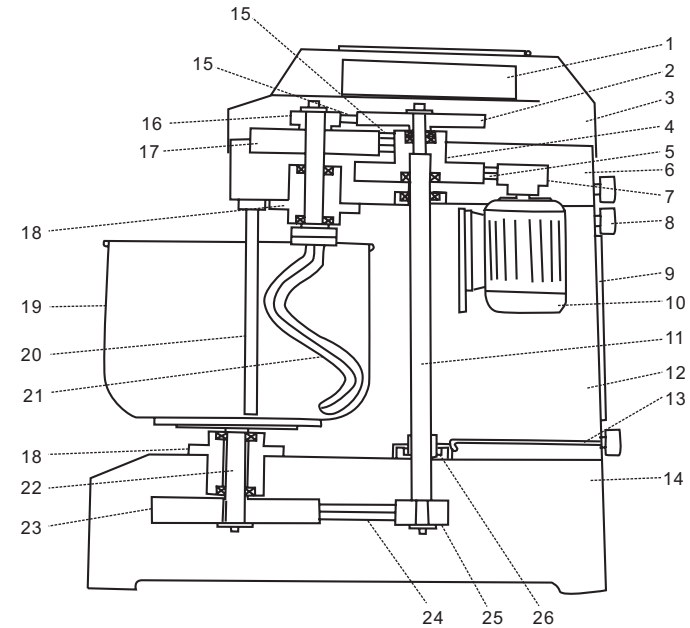
Technical data

Model No.	HS40B	HS50B	HS40B	HS50B
Rating voltage (V)	380-415~	380-415~	3-220~	3-220~
Rating power (W)	1200/1800	2800/3600	1200/1800	2800/3600
Max. spiral quantity (kg)	20	25	20	25
Spiral hook speed (r/min)	240/120	240/120	240/120	240/120
Bowl speed (r/min)	24/12	24/12	24/12	24/12

- Suggestion
1. The paste occupies the capacity of barrel material 30%-60% suitably.
 2. Flour water quantity is 50%-57%
 3. When the material is full, the machine can not work over 20 minutes continually

HS40B /HS50B Spiral Mixer

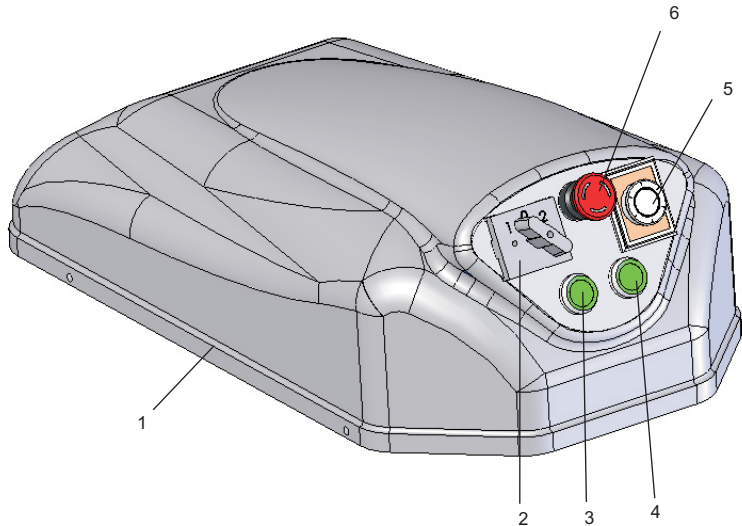
The complete machine equipment chart



	Spare parts name	Quantity
1	Circuit board	1
2	Middle single wheel	1
3	Top cover	1
4	Middle double joint wheel	1
5	Belt SPZ 812	3
6	Top box	1
7	Motot small belt wheel	1
8	Star handle	3
9	Bottom cover	1
10	Motor	1
11	Middle transmission shaft	1
12	Middle box	1
13	Pushing pole	3
14	Bottom box	1

	Spare parts name	Quantity
15	Belt SPZ850	6
16	Spiral hook small belt wheel	1
17	Spiral hook big belt wheel	1
18	Bearing seat	2
19	Bowl	1
20	Dividing paste pole	1
21	Spiral hook	1
22	Bowl axle	1
23	Bowl big belt wheel	1
24	Belt SPA1257 (HS40B)	3
	Belt SPA1382 (HS50B)	3
25	Bowl initiative wheel	1
26	Bearing UCFL207	2

SHAPE 1 Full set of top cover



	Names of spare parts	Quantity
1	Top cover	1
2	Turn switch	1
3	Start switch 2	1
4	Start switch 1	1
5	Timer relay	1
6	Urgent stop switch	1

Note:

- Cleaning by water pipe is prohibited.
- Touching the switch and electrical source by wet handkerchief is prohibited.
- When professional repairman maintains the spiral machine, we must and pull out the electrical source.

Installation adjustment and operation

Installation and adjustment

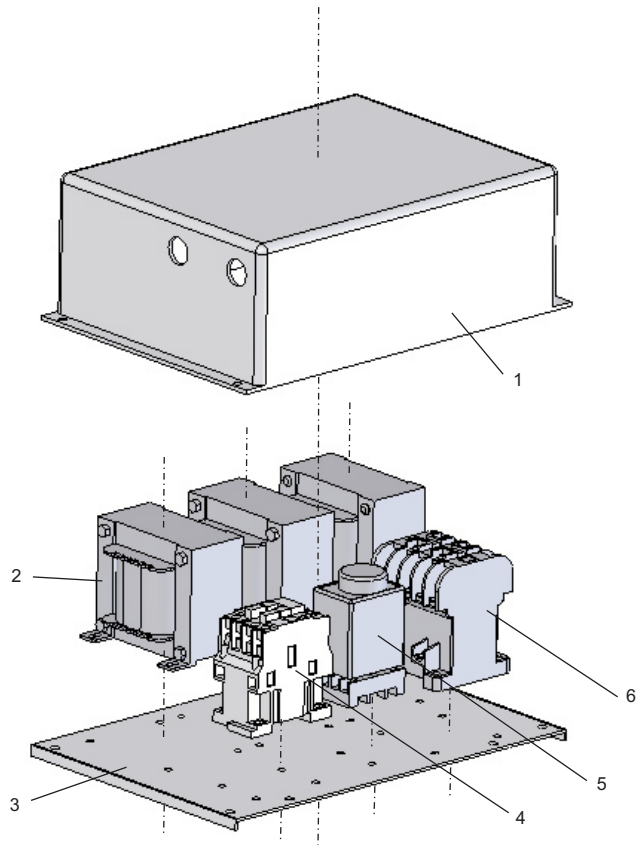
1. There is a safety-working zone in this machine, and teenagers can not operate this machine.
2. Remove the packing wooden cartons, and keep the bottom seat sleeper. The machine is put at the dry and flat ground steadily.
3. The electrician with professional electric certificate combines the electrical source and combines it to the ground.(Yellow wire alternating with green wire is the ground wire, there is the sign of ground wire on it.)
- 4.1. When it is checked, and there are no errors to combine is the microcomputer operation board. The protection net is put on the working location. Get through the electrical source, show time screen and stop button signal.
- 4.2. When it is checked, and there are no errors to combine in the microcomputer operation board. The protection net is put on the working location. Get through the electrical source.
- 5.1. The machine operates when we press the slow speed button in the microcomputer operation board. If the material barrel's direction is not the same as direction of a arrowhead mark on the barrel, stop the machine and cut down power, change location on two wires of another three wires (380V~), besides ground wire.
- 5.2. Change the knob to rotation and test the fast speed and slow speed. Press the button of slow speed, and the spiral machine runs. If the material barrel rotation direction is not the same as arrowhead direction, stop the machine and cut down power, change location on two wires of another three wires (380V~), besides ground wire, test it again.
6. Start up button of slow speed, the machine runs, lift up the protection net, machine stops. Put down the protection net, the machine re-starts up and runs.
7. Finish all above operation items, the installation and adjustment of the machine is completed.

Equipment operation

- Microcomputer operation board:
It is free to choose one of types on operation by hand and automatic operation.
- Manual operation
When the machine is operated by hand, there is no function on showing time on the screen.
When the machine needs slow speed, press the button of slow speed directly.
When the machine needs fast speed, press the button of fast speed directly.
Turn fast speed to slow speed and slow speed to fast speed, we can press the touching button.
- Automatic operation
It is set on slow speed firstly(At most 30 minutes)
Then it is set on fast speed(At most 30 minutes)
Press automatic, the light of top left corner in this button turns on, press the startup button, finish all above operation items, the machine will run automatically from slow speed to fast speed.

HS40B /HS50B Spiral Mixer

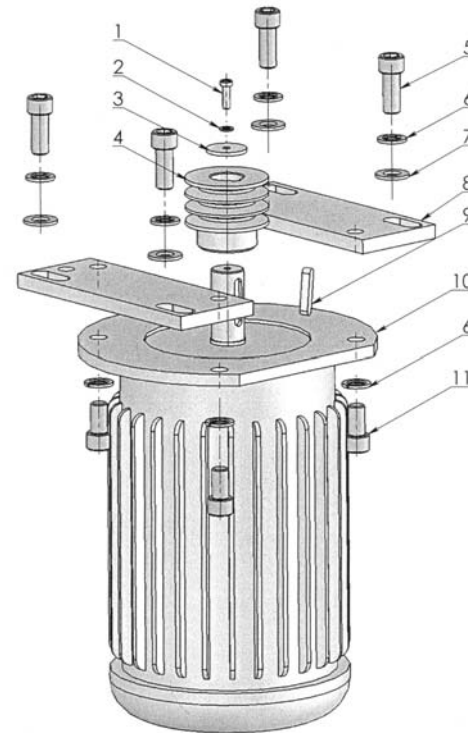
SHAPE 9 Full set of electric box



	Names of spare parts	Quantity
1	Electric box	1
2	Reactor	1
3	Electric board	1
4	AC Contact	1
5	Timer relay	1
6	AC Contact	1

HS40B /HS50B Spiral Mixer

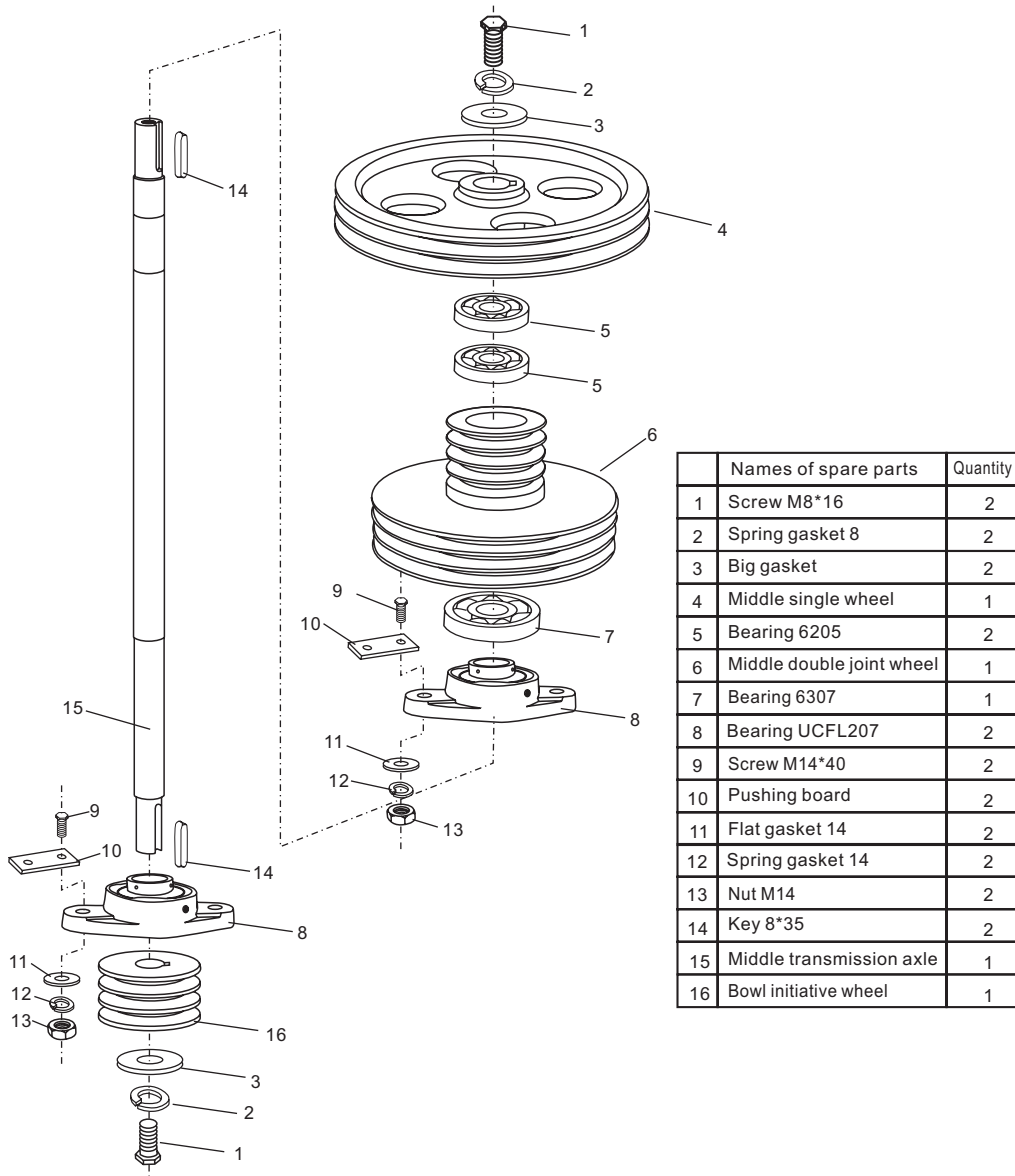
SHAPE 2 Full set of motor



	Names of spare parts	Quantity
1	Screw	1
2	Spring gasket	1
3	Gasket	1
4	Motor small belt wheel	1
5	Screw	4
6	Spring gasket	8
7	Gasket	4
8	Motor board	2
9	Key	1
10	Motor	1
11	Screw	4

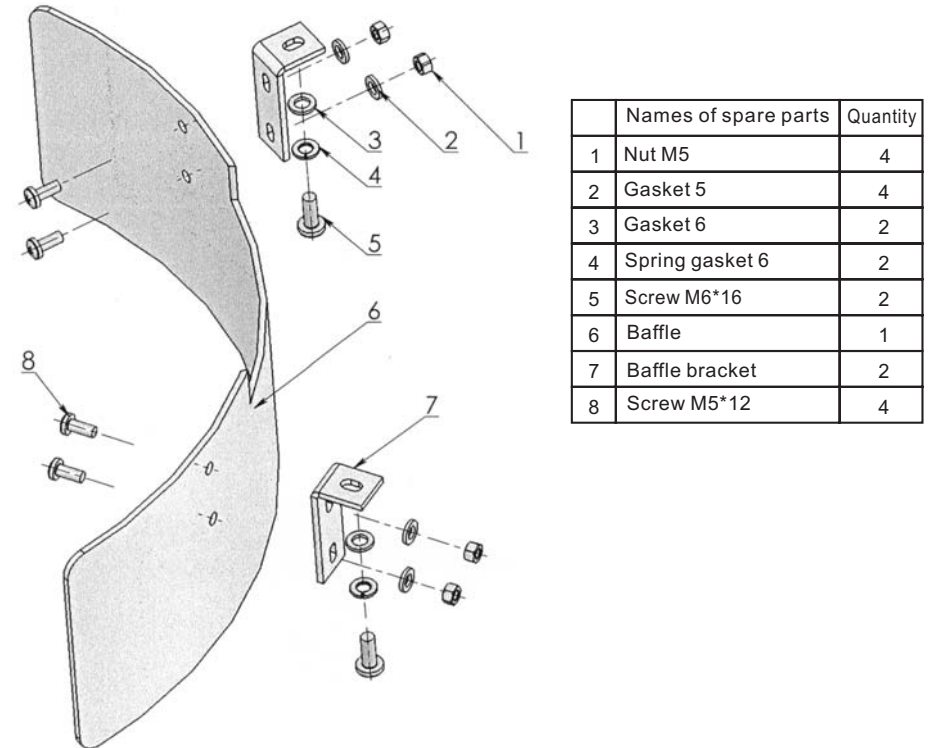
HS40B /HS50B Spiral Mixer

SHAPE 3 Full set of middle transmission axle

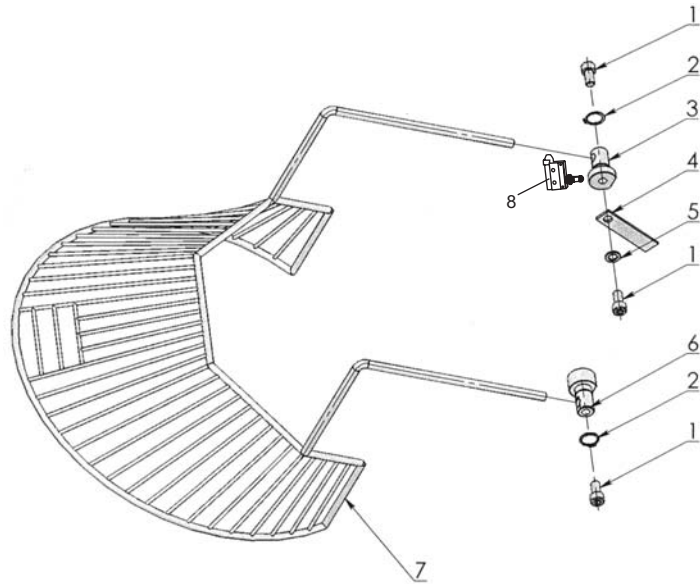


HS40B /HS50B Spiral Mixer

SHAPE 8 Full set of baffle

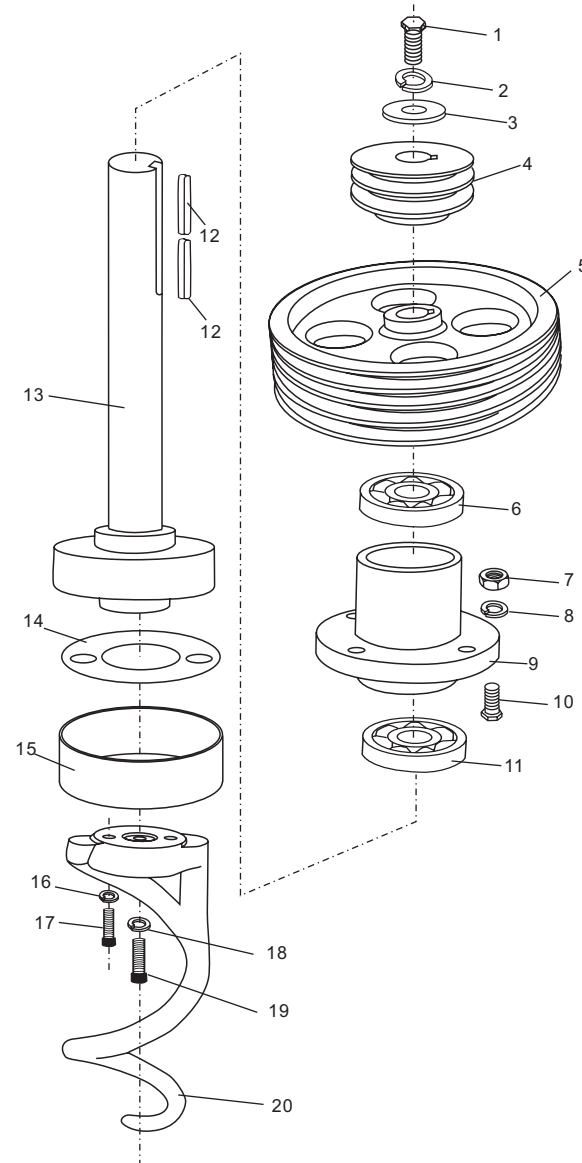


SHAPE 7 Full set of safety net



	Names of spare parts	Quantity
1	Screw M10*20	2
2	Stop ring 20	2
3	Short safety net axle	1
4	Orientation block	1
5	Spring gasket 10	2
6	Long safety net axle	1
7	Safety net	1
8	Micro switch	1

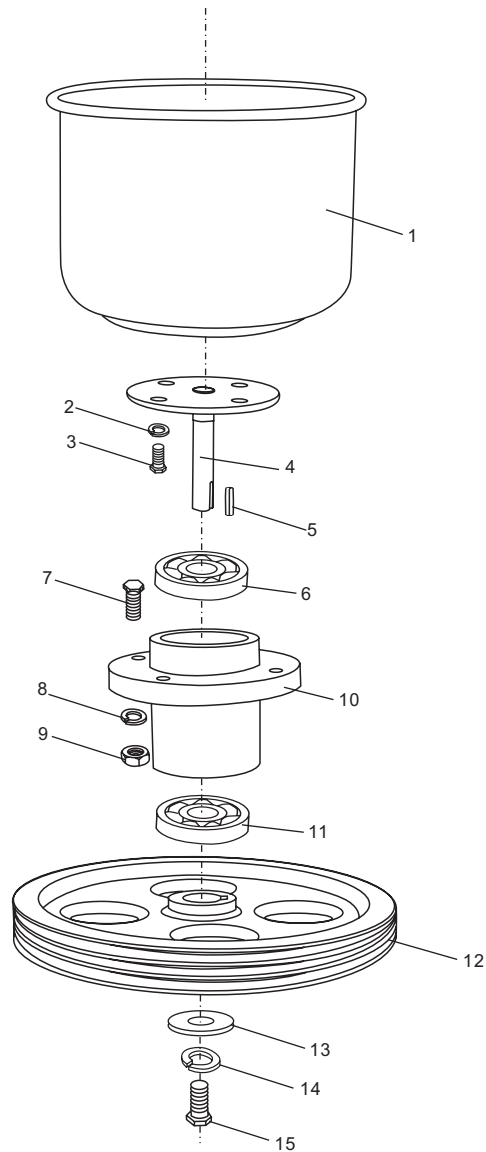
SHAPE 4 Full set of spiral hook



	Names of spare parts	Quantity
1	Screw M8*16	1
2	Spring gasket 8	1
3	Big gasket	1
4	Spiral hook small belt wheel	1
5	Spiral hook big belt wheel	1
6	Bearing 6307	1
7	Nut M12	4
8	Spring gasket 12	4
9	Bearing seat	1
10	Screw 12*50	4
11	Bearing 6307	1
12	Key 8*35	2
13	Spiral hook axle	1
14	Decoration ring adjustment gasket	2
15	Decoration ring	1
16	Spring gasket 10	2
17	Screw M10*40	2
18	Spring gasket 16	1
19	Screw M16*40	1
20	Spiral hook	1

HS40B /HS50B Spiral Mixer

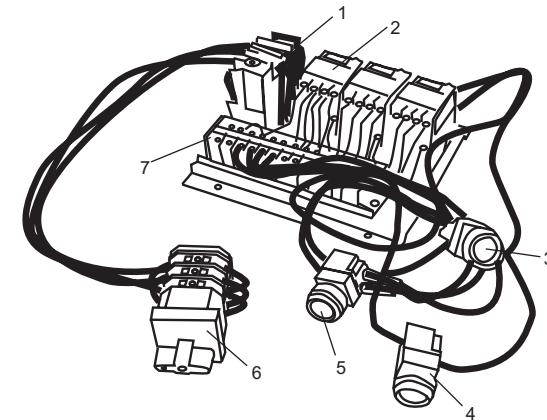
SHAPE 5 Full set of bowl



	Names of spare parts	Quantity
1	Bowl	1
2	Spring gasket 10	4
3	Screw M10*18	4
4	Bowl axle	1
5	Key 10*35	1
6	Bearing 6307	1
7	Screw M12*50	4
8	Spring gasket 12	4
9	Nut M12	4
10	Bearing seat	1
11	Bearing 6307	1
12	Bowl big belt wheel	1
13	Big gasket	1
14	Spring gasket 8	1
15	Screw M8*16	1

HS40B /HS50B Spiral Mixer

SHAPE 6 Circuit board



	Names of spare parts	Quantity
1	Relay	1
2	AC contact device	3
3	Start switch 1	1
4	Urgent switch	1
5	Start switch 2	1
6	Turn switch	1
7	Connection board	1