

HS40B-1/HS50B-1 Spiral Machine

# USER MANUAL

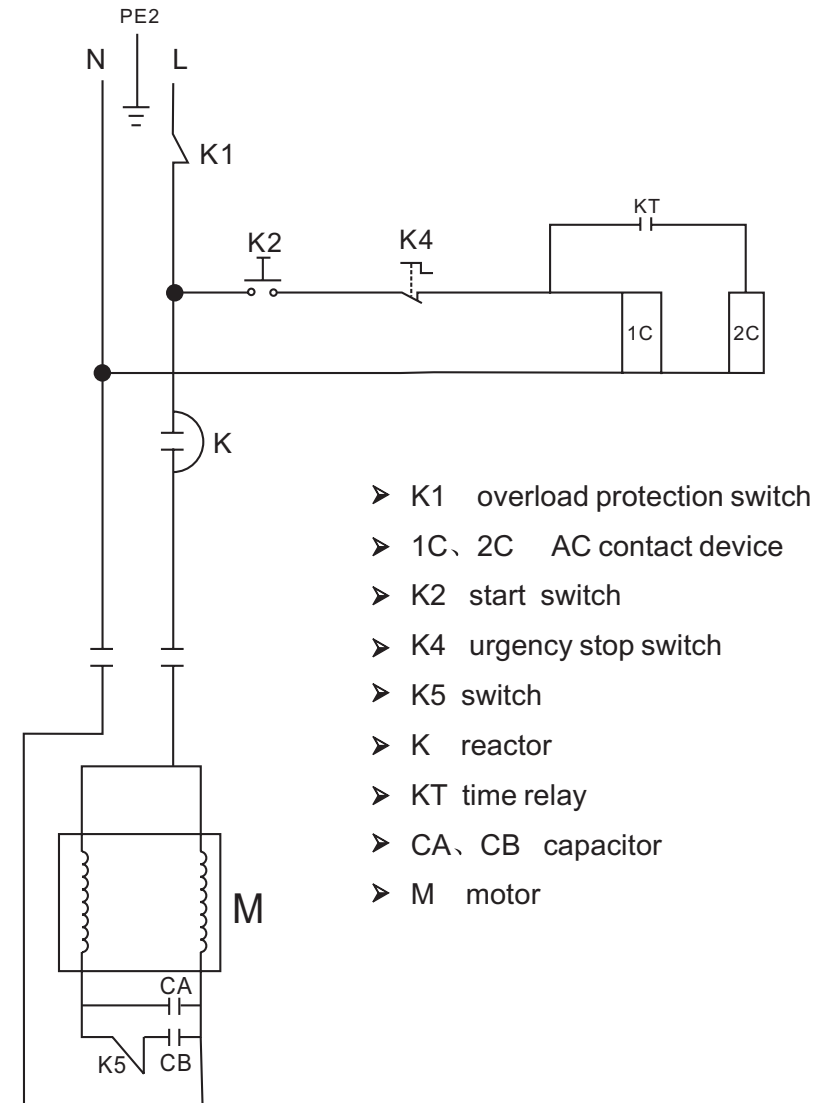


## HS40B-1/HS50B-1 Spiral machine

### Operation Manual Index

- P1. Shape 1 Full set of top cover
- P2. Shape 2 Full set of middle axle
- P3. Shape 3 Full set of bowl axle
- P4. Shape 4 Full set of spiral hook
- P5. Shape 5 Full set of motor
- P6. Shape 6 Full set of change speed axle
- P7. Shape 7 Full set of fork
- P8. Shape 8 Full set of safety net
- P9. Shape 9 Full set of baffle
- P10. Shape 10 Full set of electric box
- P10. Damage problems solving and technical data
- P11. Maintenance and warning
- P12. Electric diagram

### ELECTRIC DIAGRAM

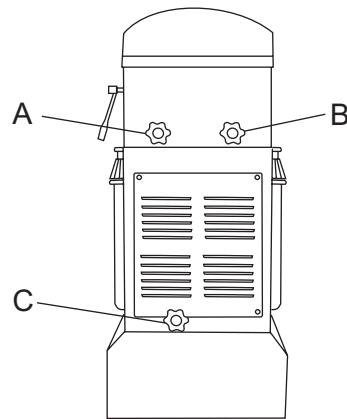


## HS40B-1/HS50B-1 Spiral machine

### Maintenance and warning

#### Maintenance of machine

- Usually, notice the voice and operation conditions of machine. All problems can be solved in time and ahead of time.
- Check the belt loose condition regularly, and adjust in time. The order of adjustment is as following: Open the top cover, disentangle the four screws for motor, twist A, B tightly, then screw down the four screws for motor, at last twist C tightly.



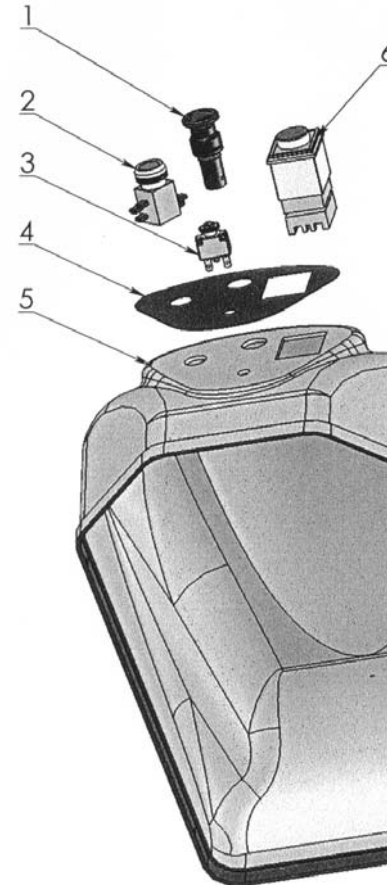
#### Warning



1. All maintenance and protection can be operated under shutting off the power.
2. Electricity appliance need operate with professional electrician.
3. The protection net is checked to operate or not before use. Lift up the protection net, shut off the power of control board, then puts down protection net and electrify the control board.
4. Shut off the total power after using the machine each time.
5. When the machine starts up rapidly, the current is big. In order to protect the machine, the computer program sets the postponing 3 seconds, the sudden slow rotary belongs to design but not damages.
6. When the machines is working, putting hands into the barrel or holding the spiral hook are prohibited.
7. Teenagers can not close to spiral machine.

## HS40B-1/HS50B-1 Spiral machine

### SHAPE 1 Full set of top cover



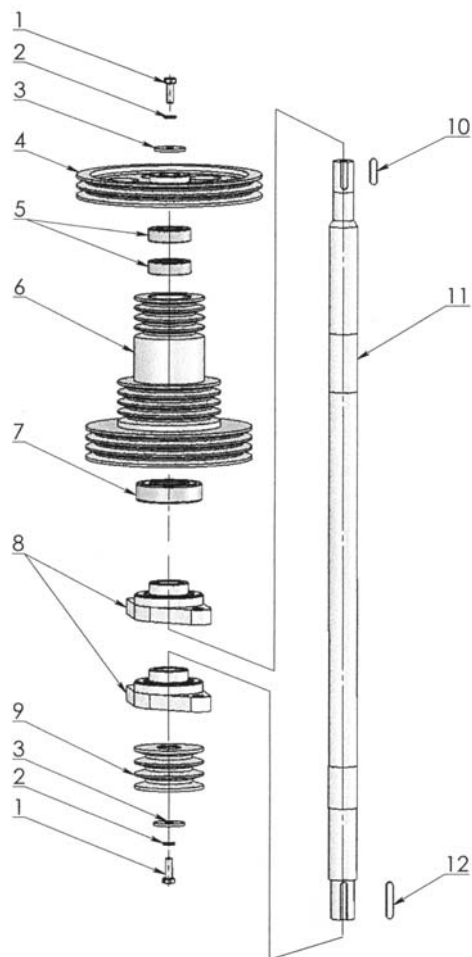
	Names of spare parts	Quantity
1	Urgent switch	1
2	Start switch	1
3	Overload switch	1
4	Panel paster	1
5	Top cover	1
6	Timer relay	1

#### Note:

- Cleaning by water pipe is prohibited.
- Touching the switch and electrical source by wet handkerchief is prohibited.
- When professional repairman maintains the spiral machine, we must and pull out the electrical source.

## HS40B-1/HS50B-1 Spiral machine

### SHAPE 2 Full set of middle axle



	Names of spare parts	Quantity
1	Screw M8*25	2
2	Spring gasket 8	2
3	Gasket 38*8.5*3	2
4	Middle axle single wheel	1
5	Bearing 6205	2
6	Multilevel belt wheel	1
7	Bearing 6307	1
8	Bearing FL207	2
9	Bowl initiative wheel	1
10	Key 8*7*32	1
11	Middle axle	1
12	Key 8*7*45	1

## HS40B-1/HS50B-1 Spiral machine

### Damage problems solving and technical data

#### Damage problems solving

Damages	Reasons	Methods
Speed of spiral slows down.	The belt is loose or voltage is too small	Adjust belt tightly. If the star handle can not be twisted tightly, take off the star handle and add 1-2 flat gaskets. At last, we twist it tightly.

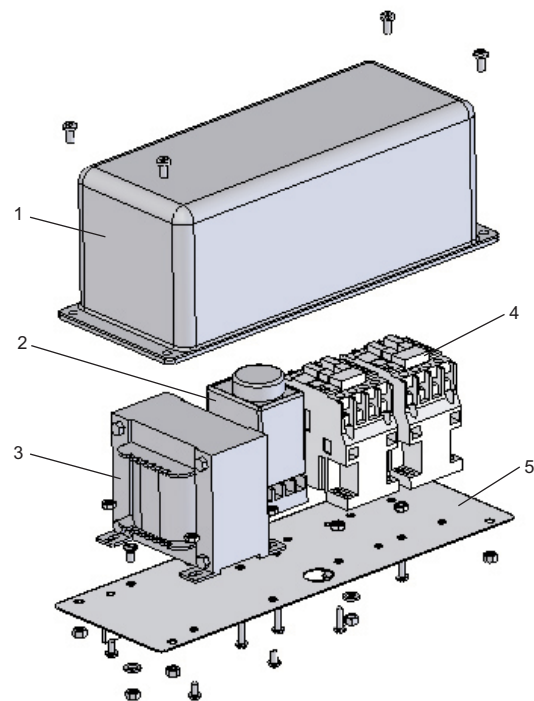
#### Technical data

	HS40 B-1	HS40 B-1	HS50 B-1	HS50 B-1
Rating voltage (V)	220-240~	110-120~	220-240~	110-120~
Rating frequency (Hz)	50	60	50	60
Rating power (W)	2100	2100	2100	2100
Max. spiral quantity (kg)	20	20	25	25
Spiral hook speed (r/min)	200/139	230/159	200/139	230/159
Bowl speed (r/min)	18/13	23/15	18/13	23/15

Suggestion 1. The paste occupies the capacity of barrel material 30%-60% suitably.  
 2. Flour water quantity is 50%-57%  
 3. When the material is full, the machine can not work over 20 minutes continually

HS40B-1/HS50B-1 Spiral machine

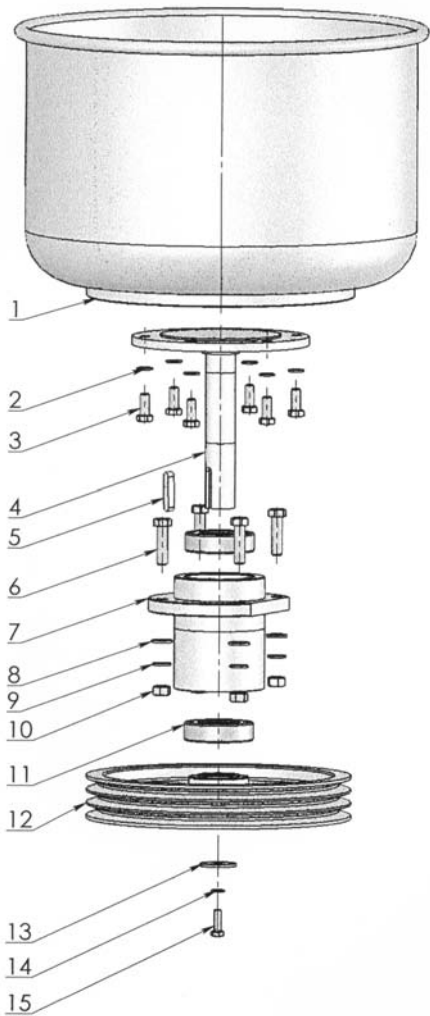
SHAPE 10 Full set of electric box



	Names of spare parts	Quantity
1	Electric box	1
2	Timer relay	1
3	Reactor	1
4	AC Contact	2
5	Electric board	1

HS40B-1/HS50B-1 Spiral machine

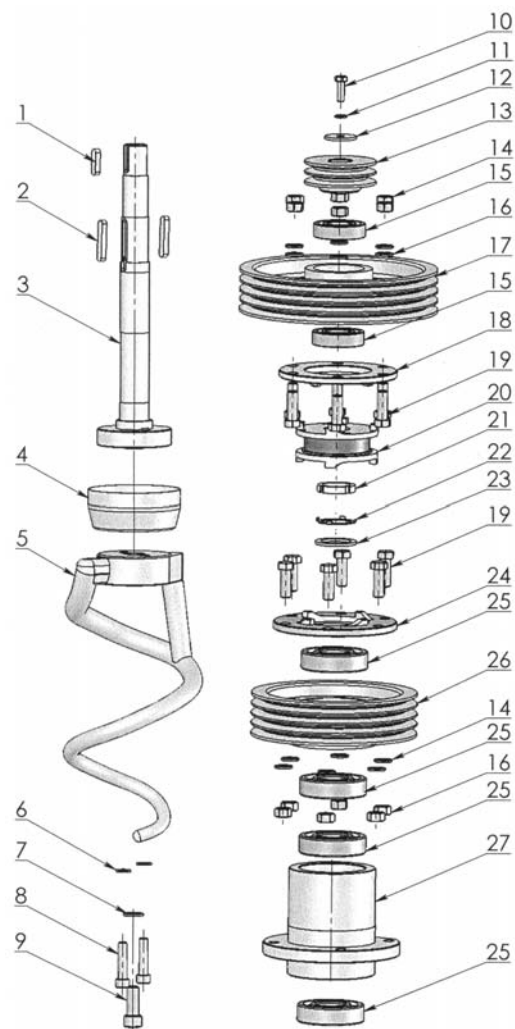
SHAPE 3 Full set of bowl axle



	Names of spare parts	Quantity
1	Bowl	1
2	Spring gasket 10	6
3	Screw M10*25	6
4	Bowl axle	1
5	Key 10*8*45	1
6	Screw M12*45	4
7	Bearing seat	1
8	Gasket 12	4
9	Spring gasket 12	4
10	Nut M12	4
11	Bearing 6307	2
12	Bowl big belt wheel	1
13	Big gasket 42*8.5*3	1
14	Spring gasket 8	1
15	Screw M8*25	1

## HS40B-1/HS50B-1 Spiral machine

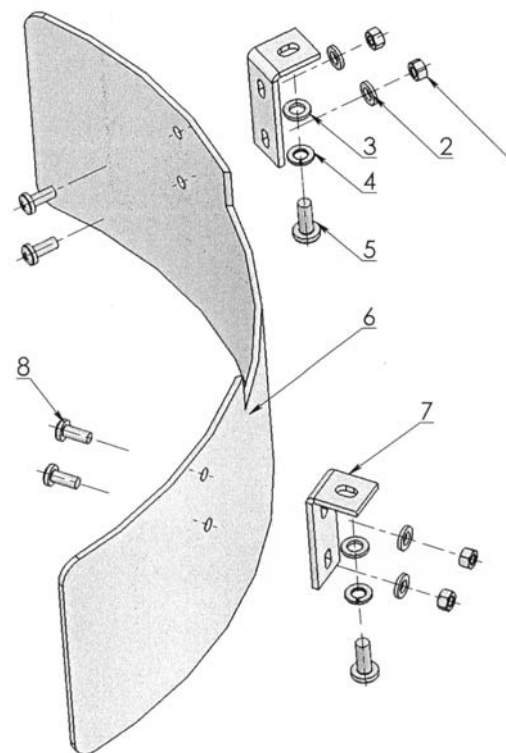
### SHAPE 4 Full set of spiral hook



	Names of spare parts	Quantity
1	Key 8*7*32	1
2	Key 8*7*50	2
3	Spiral hook axle	1
4	Decoration ring	1
5	Spiral hook	1
6	Spring gasket 10	2
7	Spring gasket 14	1
8	Screw M10*45	2
9	Screw M14*35	1
10	Screw M8*25	1
11	Spring gasket 8	1
12	Gasket 38*8.5*3	1
13	Spiral hook small belt wheel	1
14	Nut M12	8
15	Bearing 6206	1
16	Spring gasket 12	8
17	Low-speed belt wheel	1
18	Low-speed belt joint	1
19	Screw M12*35	12
20	Joint	1
21	Nut M35*1.5	1
22	Ring 35	1
23	Spiral hook axle gasket	1
24	High-speed joint	1
25	Bearing 6307	2
26	High-speed belt wheel	1
27	Bearing seat	1

## HS40B-1/HS50B-1 Spiral machine

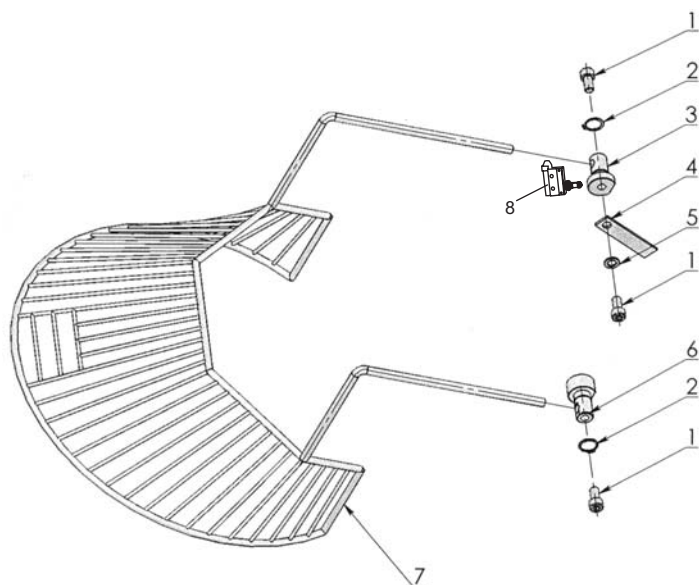
### SHAPE 9 Full set of baffle



	Names of spare parts	Quantity
1	Nut M5	4
2	Gasket 5	4
3	Gasket 6	2
4	Spring gasket 6	2
5	Screw M6*16	2
6	Baffle	1
7	Baffle bracket	2
8	Screw M5*12	4

## HS40B-1/HS50B-1 Spiral machine

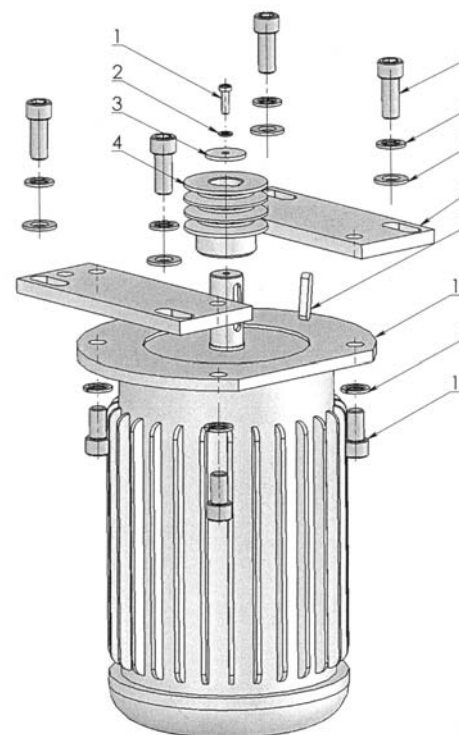
### SHAPE 8 Full set of safety net



	Names of spare parts	Quantity
1	Screw M10*20	2
2	Stop ring 20	2
3	Short safety net axle	1
4	Orientation block	1
5	Spring gasket 10	2
6	Long safety net axle	1
7	Safety net	1
8	Micro switch	1

## HS40B-1/HS50B-1 Spiral machine

### SHAPE 5 Full set of motor

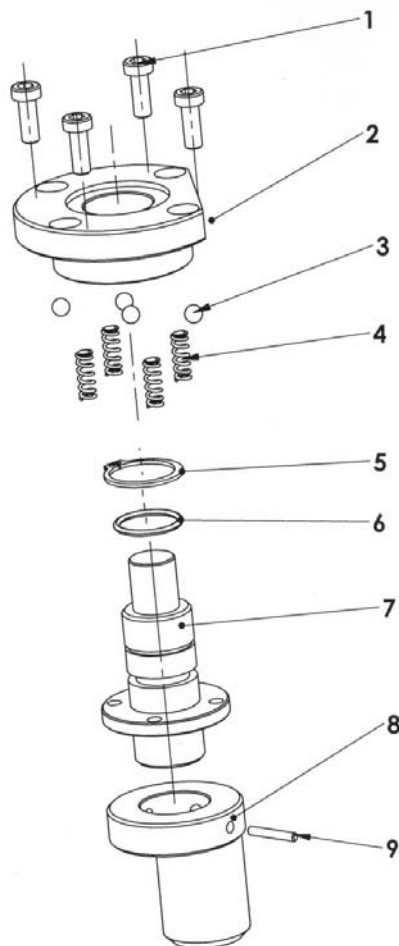


	Names of spare parts	Quantity
1	Screw M6*20	1
2	Spring gasket 6	1
3	Gasket 34*6.5*3	1
4	Motor small belt wheel	1
5	Screw M14*35	4
6	Spring gasket 14	8
7	Gasket 14	4
8	Motor board	2
9	Key 8*7*40	1
10	Motor	1
11	Screw M14*25	4



## HS40B-1/HS50B-1 Spiral machine

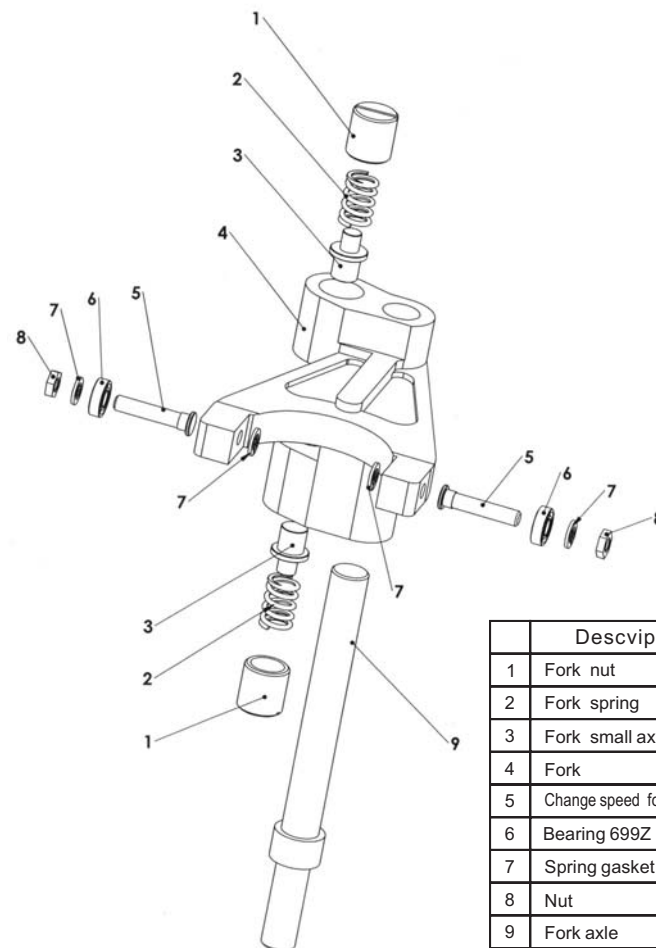
### SHAPE 6 Full set of change speed axle



	Description	Qty
1	Screw M6*16	4
2	Speed block	1
3	Steel bal 6	4
4	Spring	4
5	Stop ring	1
6	O ring	1
7	Change speed axle	1
8	Eccentricity knot	1
9	Pin	1

## HS40B-1/HS50B-1 Spiral machine

### SHAPE 7 Full set of fork



	Description	Qty
1	Fork nut	2
2	Fork spring	2
3	Fork small axle	2
4	Fork	1
5	Change speed fork small axle	2
6	Bearing 699Z	2
7	Spring gasket 8	2
8	Nut	2
9	Fork axle	1