

HS140B/HS140BD Spiral machine

USER MANUAL

CE

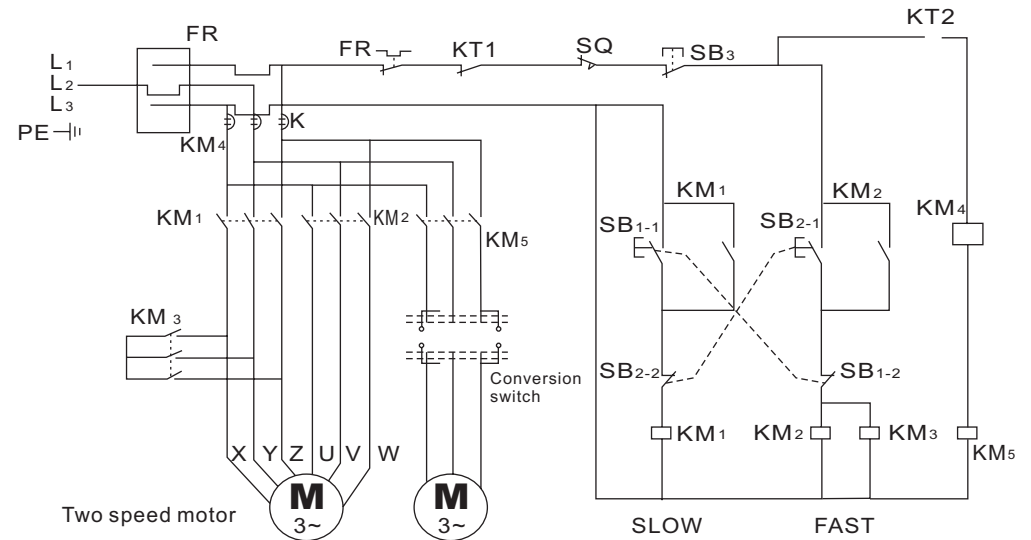


Operation Manual Index

1. The complete machine equipment chart
2. Spare part statement chart
3. Shape 1 Full set of spiral hook axle
4. Shape 2 Full set of pass belt-wheel seat
5. Shape 3 Full set of big motor
6. Shape 4 Full set of bowl's motor
7. Shape 5 Full set of shield wheel
8. Shape 6 Full set of foot wheel
9. Shape 7 Full set of strain wheel
10. Operation board statement
11. Installation adjustment and operation
12. Damage problems solving and technical data
13. Electric diagram and warning

Electric diagram and warning

Electric Diagram



Warning



1. All maintenance and protection can be operated under shutting off the power.
2. Electricity appliance need operate with professional electrician.
3. The protection net is checked to operate or not before use. Lift up the protection net, shut off the power of control board, then puts down protection net and electrify the control board.
4. Shut off the total power before using the machine each time.
5. When the machine starts up rapidly, the current is big. In order to protect the machine, the computer program sets the postponing 3 seconds, the sudden slow rotary belongs to design but not damages.
6. When the machines is working, putting hands into the barrel or holding the spiral hook are prohibited.
7. Teenagers can not close to spiral machine.

HS140B/HS140BD Spiral machine

Damage problems solving and technical data

Damage problems solving

Damages	Reasons	Methods
When the machine runs automatically, press the pause button in the middle way, the machine can not work even re-start up it.	The computer can not renew.	Lift up the protection net, turn off the power, and put down protection net.
The machine stops suddenly and it takes a long time to run overtime.	Electricity components is too hot	Open the top of electricity door, and press the machine red button
Speed of spiral slows down.	Voltage is too small	

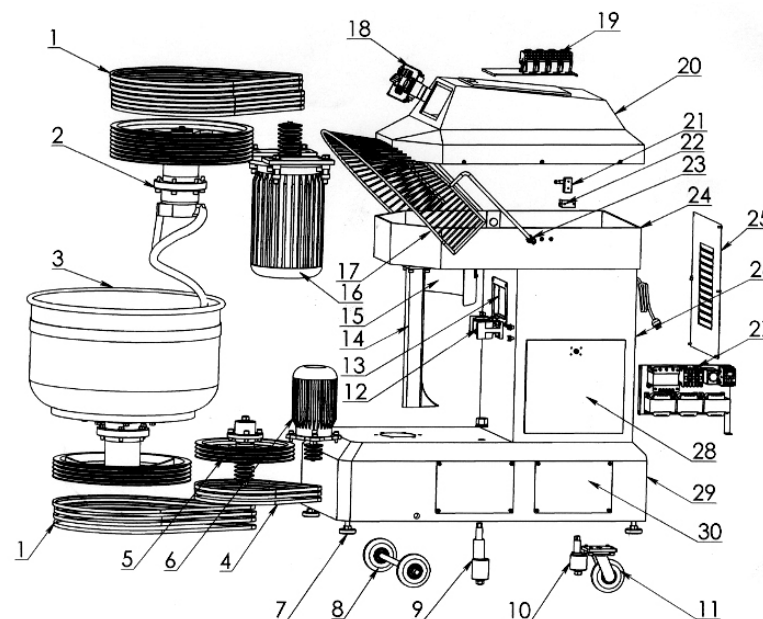
Technical data

	HS140 S	HS140D
Rating voltage (V)	380~	380~
Rating frequency (Hz)	50	50
Rating power (W)	2800/5600	2800/5600
Max. spiral quantity (kg)	50	50
Spiral hook speed (r/min)	220/110	220/110
Bowl speed (r/min)	22/22	22/22

Suggestion 1. The paste occupies the capacity of barrel material 30%-60% suitably.
 2. Flour water quantity is 50%-57%
 3. When the material is full, the machine can not work over 20 minutes continually

HS140B/HS140BD Spiral machine

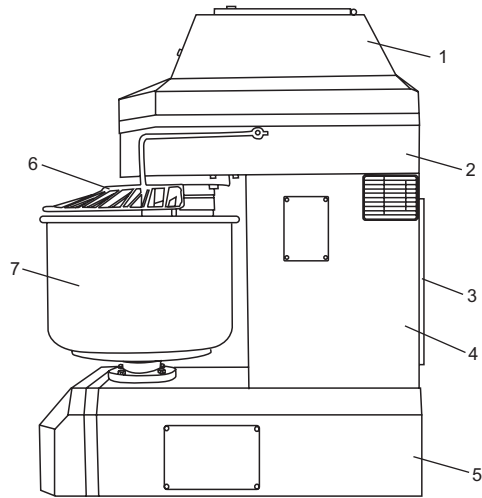
The complete machine equipment chart



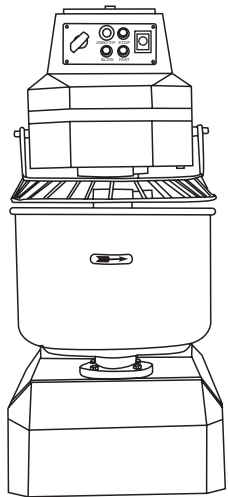
	Spare parts name	Quantity
1	Belt SPA 1882	7
2	Mixing axle	1
3	Bowl axle	1
4	Belt SPA 1250	1
5	Pass belt-wheel seat	3
6	Bowl's motor	1
7	Support block	1
8	Foot wheel	1
9	Strain wheel II	1
10	Strain wheel I	1
11	Universal wheel	1
12	Shield wheel	2
13	Stand board	1
14	Dividing paste pole	1
15	Ward flour board	1

	Spare parts name	Quantity
16	Big motor	1
17	Safety net	1
18	Operation board	1
19	Circuit board (above)	1
20	Top cover	1
21	Micro-switch	1
22	Micro-switch support	1
23	Safety net shaft	1
24	Above box	1
25	Back cover	1
26	Middle box	1
27	Circuit board (under)	1
28	Door	1
29	Nether box	1
30	Lateral cover	2

Spare part statement chart



Number	Name
1	Top cover
2	Top box
3	Bottom cover
4	Middle box
5	Bottom box
6	Protection net
7	Bowl



Note:

- Cleaning by water pipe is prohibited.
- Touching the switch and electrical source by wet handkerchief is prohibited.
- When professional repairman maintains the spiral machine, we must and pull out the electrical source.

Installation adjustment and operation

Installation and adjustment

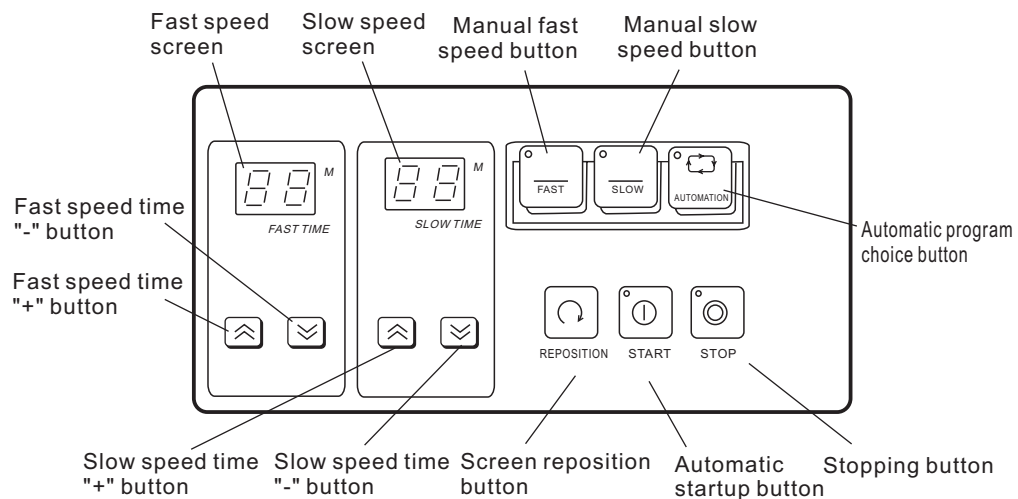
1. There is a safety-working zone in this machine, and teenagers can not operate this machine.
2. Remove the packing wooden cartons, and keep the bottom seat sleeper. The machine is put at the dry and flat ground steadily.
3. The electrician with professional electric certificate combines the electrical source and combines it to the ground. (Yellow wire alternating with green wire is the ground wire, there is the sign of ground wire on it.)
- 4.1. When it is checked, and there are no errors to combine is the microcomputer operation board. The protection net is put on the working location. Get through the electrical source, show time screen and stop button signal.
- 4.2. When it is checked, and there are no errors to combine in the microcomputer operation board. The protection net is put on the working location. Get through the electrical source.
- 5.1. The machine operates when we press the slow speed button in the microcomputer operation board. If the material barrel's direction is not the same as direction of a arrowhead mark on the barrel, stop the machine and cut down power, change location on two wires of another three wires (380V~), besides ground wire.
- 5.2. Change the knob to rotation and test the fast speed and slow speed. Press the button of slow speed, and the spiral machine runs. If the material barrel rotation direction is not the same as arrowhead direction, stop the machine and cut down power, change location on two wires of another three wires (380V~), besides ground wire, test it again.
6. Start up button of slow speed, the machine runs, lift up the protection net, machine stops. Put down the protection net, the machine re-starts up and runs.
7. Finish all above operation items, the installation and adjustment of the machine is completed.

Equipment operation

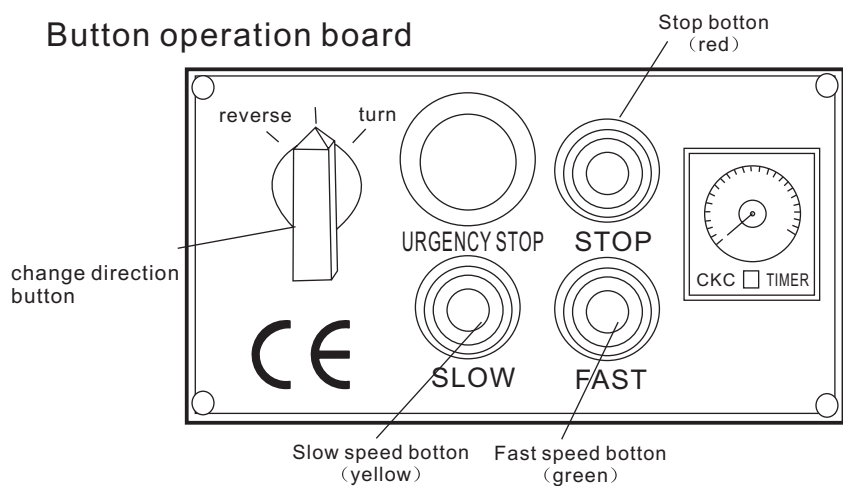
- Microcomputer operation board:
It is free to choose one of types on operation by hand and automatic operation.
- Manual operation
When the machine is operated by hand, there is no function on showing time on the screen.
When the machine needs slow speed, press the button of slow speed directly.
When the machine needs fast speed, press the button of fast speed directly.
Turn fast speed to slow speed and slow speed to fast speed, we can press the touching button.
- Automatic operation
It is set on slow speed firstly (At most 30 minutes)
Then it is set on fast speed (At most 30 minutes)
Press automatic, the light of top left corner in this button turns on, press the startup button, finish all above operation items, the machine will run automatically from slow speed to fast speed.

Operation board statement

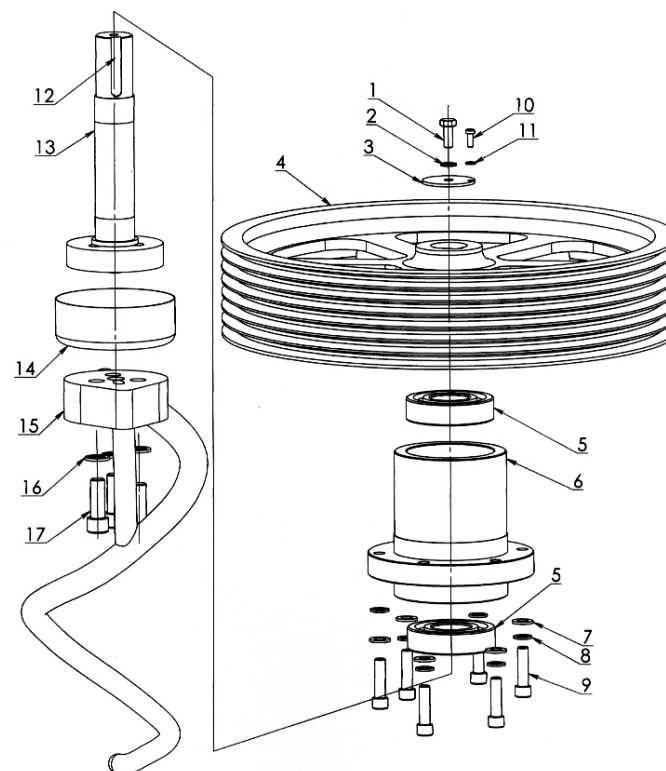
Microcomputer operation board



Button operation board



SHAPE 1 full set of spiral hook axle

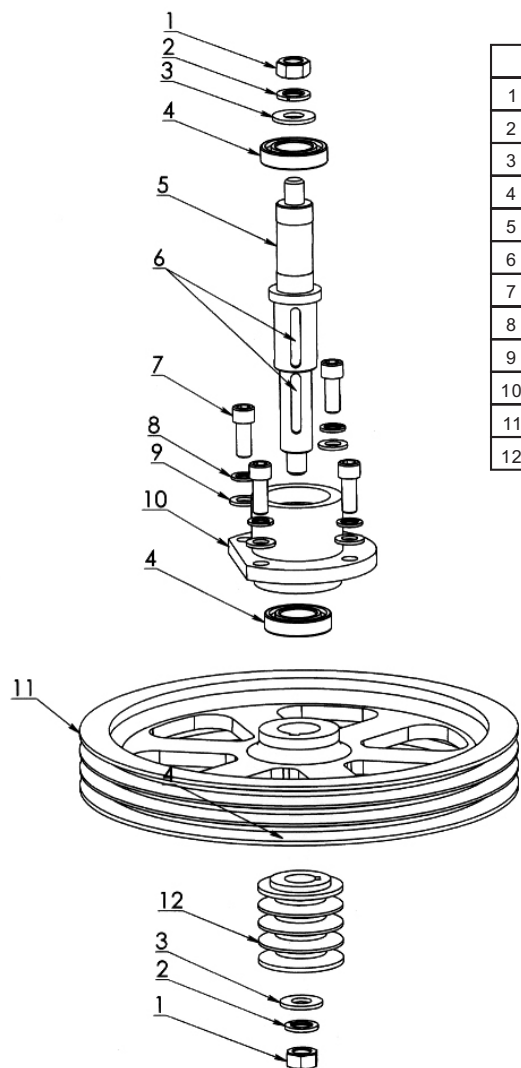


	Spare parts name	Quantity
1	Screw M10*25	1
2	Spring gasket 10	1
3	Gasket 60*10.5*3	1
4	Spiral hook axle belt wheel	1
5	Bearing 6309	2
6	Bearing support	1
7	Gasket 12	6
8	Spring gasket 12	6
9	Screw M12*45	6

	Spare parts name	Quantity
10	Screw M6*16	1
11	Spring gasket 6	1
12	Key 12*8*60	1
13	Spiral hook axle	1
14	Ring	1
15	Spiral hook	1
16	Spring gasket 16	3
17	Screw M16*45	3

HS140B/HS140BD Spiral machine

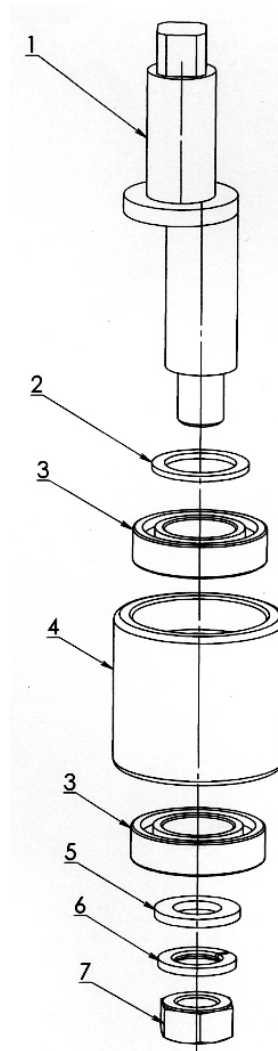
SHAPE 2 Full set of pass belt-wheel seat



	Names of spare parts	Quantity
1	Nut M16	1
2	Spring gasket 16	1
3	Gasket 35*16.5*3	1
4	Bearing 6006	2
5	Pass belt-wheel axle	1
6	Key 10*8*40	2
7	Screw M12*30	4
8	Gasket 12	4
9	Nut M12	4
10	Pass belt-wheel seat	1
11	Big pass belt-wheel	1
12	Small pass belt-wheel	1

HS140B/HS140BD Spiral machine

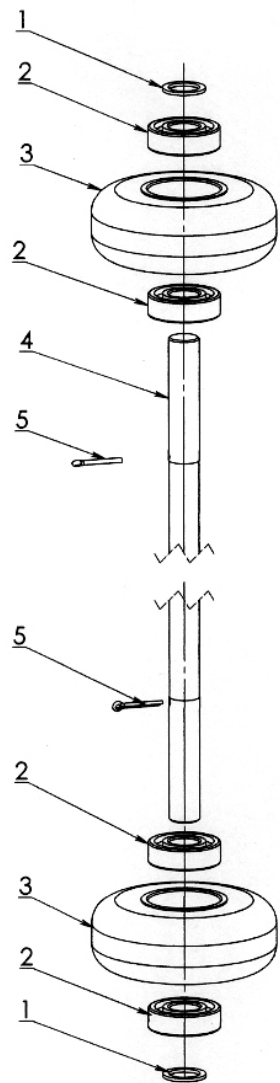
SHAPE 7 full set of strain wheel



	Spare parts name	Quantity
1	Strain wheel axle	1
2	Bearing gasket	1
3	Bearing 6005	2
4	Strain wheel axle	1
5	Gasket 16	1
6	Spring gasket 16	1
7	Nut M16	1

HS140B/HS140BD Spiral machine

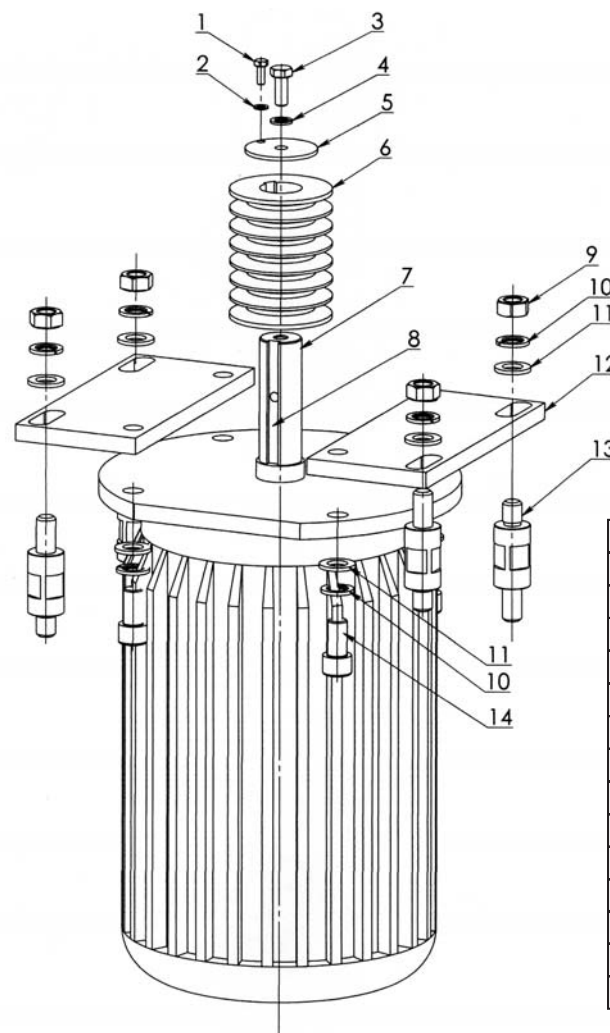
SHAPE 6 full set of foot wheel



	Spare parts name	Quantity
1	Gasket	2
2	Bearing 6204	4
3	Foot wheel	2
4	Foot wheel axle	1
5	Pin 3	2

HS140B/HS140BD Spiral machine

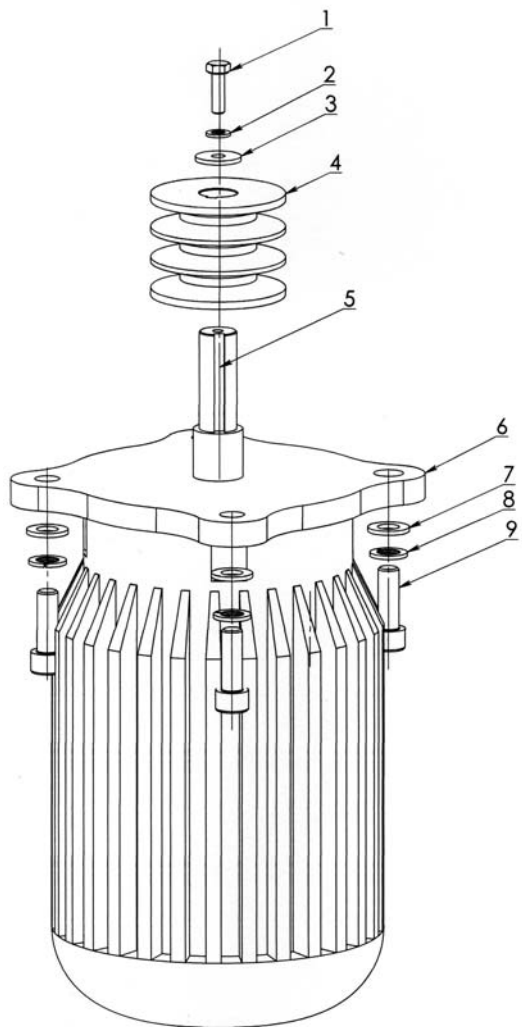
SHAPE 3 Full set of big motor



	Names of spare parts	Quantity
1	Screw M6*16	1
2	Spring gasket 6	1
3	Screw M10*25	1
4	Spring gasket 10	1
5	Gasket 60*10.5*3	1
6	Big motor belt wheel	1
7	Big motor	1
8	Key 10*8*60	1
9	Nut M16	4
10	Spring gasket 16	8
11	Gasket 16	8
12	Big motor board	2
13	Big motor axle	4
14	Screw M16*30	4

HS140B/HS140BD Spiral machine

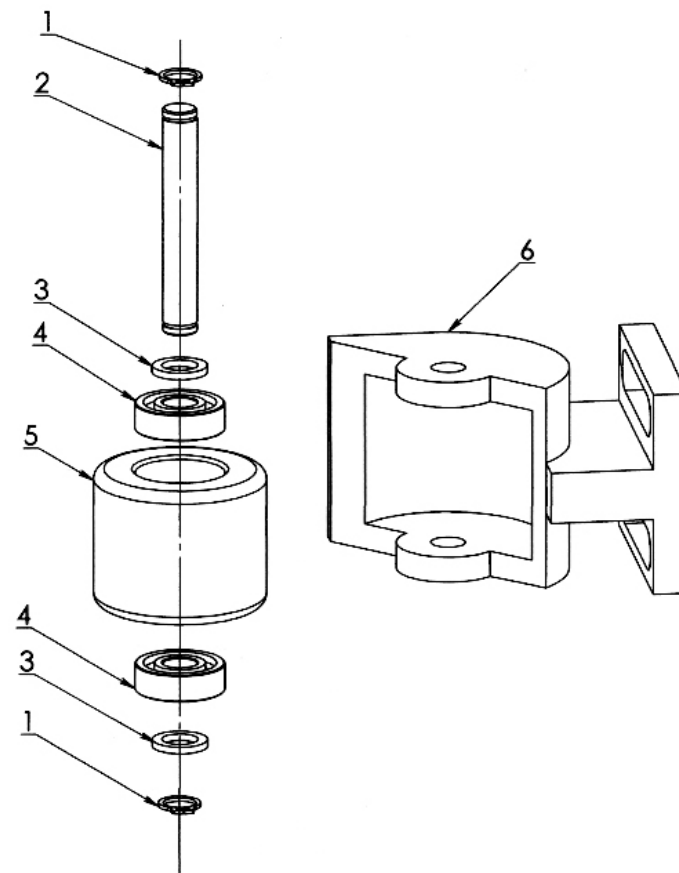
SHAPE 4 Full set of bowl's motor



	Names of spare parts	Quantity
1	Screw M6*20	1
2	Spring gasket 6	1
3	Gasket 22*6.5*3	1
4	Small motor belt wheel	1
5	Key 5*5*40	1
6	Bowl's motor	1
7	Gasket 10	4
8	Spring gasket 10	4
9	Screw 10*30	4

HS140B/HS140BD Spiral machine

SHAPE 5 Full set of shield wheel



	Names of spare parts	Quantity
1	Stop ring 10*1	2
2	Shield wheel axle	1
3	Shield wheel gasket	2
4	Bearing 6000	1
5	Shield wheel	1
6	Shield wheel seat	1